



# NOVELTEK

MATERIAL HANDLING EQUIPMENT

*Made In Taiwan*

CE BY SGS (UK)

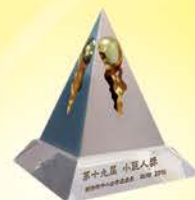
ISO9001



FM96023



TAIWAN  
EXCELLENCE  
2016



RISING STAR  
AWARD  
2016



# NOVELTEK

**NOVELTEK** is a leading Taiwanese manufacturer of powered and manual material handling equipment since 1990. We supply a full spectrum of models to provide you with a complete range of material handling equipment, and can manufacture equipment to comply with your special or unique requirement/ specifications. All our products are **Made In Taiwan (M.I.T.)**.

Our reputation for blending steadfast reliability and environmentalism has made **NOVELTEK** a well known and proven name in the industry. Our equipment is exported to 38 countries across the globe. Among these are Japan, Germany, the UK, Australia, the US, Canada, Sweden, Denmark, Norway, Belgium, Holland, Austria, Greece, Brazil, Mexico, India, Egypt, Tunisia, Jordan, Korea, Hong Kong and most Asian countries. We insist on delivering reliable, low maintenance equipment and we implement a strict quality control policy. **NOVELTEK** occupies a solid market share which continues to grow due to our endeavors in R&D as well as our comprehensive customer service. All of our products are CE and ISO 9001 certified and surpass 2006/42/EC and 2006/95/EC quality regulations. Clients count on **NOVELTEK** to raise productivity, shorten man hours and reduce cost in a variety of ways. With **NOVELTEK** material handling equipment, you can better manage your time before time gets the better of you.

We offer a wide variety of excellent machinery at very reasonable prices and guarantee the shortest delivery time.

We can provide feasible solution to your unique or special material handling situation. Please do not hesitate to contact us if you have any special requirements or inquires.

We appreciate all of your support and look forward to developing a mutually beneficial relationship with you soon.

Regarding our shipping space, one 20 feet container can carry 5 units of ABF/ABT models; or 7 units of ART/CRT/ACS/CWS/CWR/POPS models; or 10 units of APS/PPS/POTR models; or 12 units of APT/PPT/SPOP/TT/ATT/MOTR models; or 18 units of MOTL models; or 21 units of SPS models; or 24 units of MPS-10 models; or 32 units of MPS-04 models, or 52 units of LT models; or 80 units of OT models; or 144 units of HPT models; or mix all models by percentage.





## ABF-15/20/25

### ADVANCED ELECTRIC FORKLIFT TRUCK (AC SYSTEM) (1.5 TONS / 2 TONS / 2.5 TONS)

#### ★ ABF-15/20/25 Specification ★

MODEL			ABF-15	ABF-20	ABF-25
Rated Capacity			1500 kg	2000 kg	2500 kg
Load Center			500 mm		
Fork (TxWxL)	B	40x100x1070 mm	45x100x1070 mm		
Fork Adjustable Width	W1	200~970 mm	200~1020 mm		
Lifting Height	H1	3000 mm			
Free Lift			155 mm	155 mm	155 mm
Fork Tilting Angle (F/R)			6° /12°		
Overhead Guard Height	H3	2110 mm			
Turning Radius	W	1830 mm	1960 mm	1960 mm	
Inverter			AC Stepless		
Power			Battery		
Tires	Front	6.50-10	6.50-10	24x7-12	
	Rear	5.00-8	18x7-8	18x7-8	
	No.of tires(F/R)	2/2			
	Material: Rubber	Pneumatic Shaped Soft Solid			
Overall Length (w/o) fork	L1	2050mm	2180 mm	2250 mm	
Overall Width	R	1170 mm			
Lifting Speed	Loaded	270 mm/s	240 mm/s	210 mm/s	
	Empty	450 mm/s	480 mm/s	480 mm/s	
Lowering Speed	Loaded	545 mm/s	535 mm/s	520 mm/s	
	Empty	540 mm/s	510 mm/s	480 mm/s	
Traveling Speed	Loaded	12 km/h	12 km/h	11 km/h	
	Empty	14 km/h	13 km/h	13 km/h	
Gradeability	Loaded	18%	18%	18%	
	Empty	24%	24%	20%	
Weight	Inc. Battery	3250 kg	3450 kg	4030 kg	
	Exc.Battery	2550 kg	2650 kg	2900 kg	
Min. Width Intersection Aisle			3660 mm	3900 mm	4050 mm
Wheel Base	L	1280 mm	1400 mm	1400 mm	
Motor	Drive motor	8 kw AC	10 kw AC		
	Lift Motor (Steering included)	12.0 kw AC	12.0 kw AC	12.0 kw AC	
Ground Clearance			95 mm		
Battery(48V/ 5HR)			400 AH	480 AH	560 AH
Charger(48V/3 phases)Max. Current			80 A		
Distance between center of wheel and fork	L2	430 mm	480 mm	480 mm	

● Optional type & scales for ABF's Masts

- AC stepless inverter
- Save electricity efficiently by 30%
- Without carbon brush, easy maintenance
- No noise
- No pollution
- Can be turned in a 3.3 meter wide aisle for model ABF-15/20
- Soft solid tyres on 4 wheels
- Full hydraulic power steering
- Max fork lifting height between 2 meters and 6.35 meters
- Hydraulic power brake
- Mechanical hand parking brake
- Lead-free PU baked enamel painting
- Triple stage, full free lift mast, -35°C cold storage version, side shift, special attachment clamps, and explosion protection and shaft type forged forks are available as options.



The tubular powerful Traction Battery with high capacity can handle a full work shift after 8 hours charge and has a 5 years life time when normally operated and maintained.



An easily read instrument panel makes it easy to control.



Microprocessor charger with equalizing function

## **FBR-10/15/20**

### **COUNTERBALANCED REACH TRUCK (1 TON / 1.5 TONS / 2 TONS)**

- Mast reach electric stacker.
- Advanced ac motor product.
- Without carbon brush, easy maintenance.
- Save electricity efficiently by 30%.
- Lead-free pu baked enamel painting.
- Easy drive steering wheel .
- Mast draw back can reduce truck weight, length and increase stability.
- No pollution, quiet, safty, durable and reliable
- Easy change battery by side move design.
- Electric-motor power steering (E.P.S.) Provides surprisingly-light steering and allows for easy operation in narrow aisles.
- LCD graphic smart display is an intelligent dashboard connected to the truck system by can-bus line. Which provides the operator with a easy information about the status of some truck devices.

Optional items:

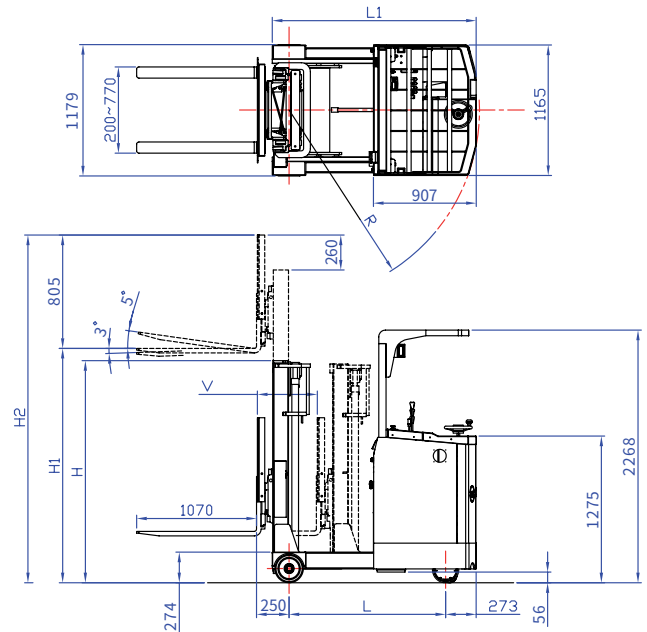
-35°C Cold storage version, side shift...Etc. Are available as options.





## FBR-10/15/20 Specifications

MODEL		UNIT	FBR-10	FBR-15	FBR-20
Rated Capacity		kg	1000	1500	2000
Load Center		mm	500		
Overall length (L1)		mm	1620	1790	2050
Wheel base (L)		mm	1230	1540	1660
Overall length extended (E1)		mm	1746	1942	2150
Turning radius (R)		mm	1700	1700	1950
Reach length (V)		mm	295	575	720
Travel speed	Loaded	km/h	8.5	9	9
	Empty	km/h	9	11	11
Lifting speed	Loaded	mm/s	300	300	220
	Empty	mm/s	330		
Gradeability	Loaded		12%		10%
	Empty		20%		
AC motor	Drive	kw/ 48V	4.0		
	Steer	kw/ 48V	0.4		
	Lift	kw/ 48V	12		
Controller	Drive		ACMOS		
	Lift		ACMOS		
Battery (48V)			320		
Wheels/ model			Solid		
Fork wheel	PU		Ø254x110mm x2		
Drive wheel			Ø380x165mm x1		
Balance wheel			Ø178x69mm x2		
Weight (Inc. Battery)			2125	2188	2220



MAST TYPES		MAX. FORK HEIGHT (mm)									
		2000	*2500	3000	3500	4000	4500	5000	5500	6000	6300
DUPLEX MAST TELESCOPIC											
MIN. MAST HEIGHT (N)	H	1490	1740	1990	2240	2490					
MAX. MAST HEIGHT (P)	H2	2810	3310	3810	4305	4810					
DUPLEX MAST HI-LO FULL FREE LIFT											
MIN. MAST HEIGHT (N)	H	1610	1860	2110	2360	2610	-	-	-	-	-
MAX. MAST HEIGHT (P)	H2	3015	3515	4015	4515	5015	-	-	-	-	-
MAX. FREE LIFT		1000	1240	1490	1740	1998	-	-	-	-	-
TRIPLE STAGE MAST HI-LO FULL FREE LIFT											
MIN. MAST HEIGHT (N)	H	-	-	1582	1832	1932	2082	2232	2382	2532	2652
MAX. MAST HEIGHT (P)	H2	-	-	4023	4523	5023	5523	6023	6523	7023	7323
MAX. FREE LIFT		-	-	950	1000	1324	1490	1650	1820	2000	2120

## ART-10/15/20/ AC+EPS

### ADVANCED COUNTERBALANCED REACH TRUCK (AC SYSTEM) ( 1 TON / 1.5 TONS / 2.0 TONS)



- With EPS (Electronic Power Steering) system, very easy to drive.
- Mast reach electric stacker
- Advanced AC motor product
- Without carbon brush, easy maintenance
- Save electricity efficiently by 30%
- FRP body cover and battery cover
- Lead-free PU baked enamel painting
- Polyoxymethylene Steering Arm
- Mast draw back can reduce truck weight, reduce truck length and increase stability
- With a slow drive speed switch for duplex mast HI-LO (3M or above) and triple stage mast HI-LO (3.5M or above)
- No pollution, quiet, safety, durable and reliable
- Easy change battery by side move design.

#### Optional items:

-35°C cold storage version, foldable side protection guards, side shift, battery change table, shaft type forks, crane...etc. are available as options



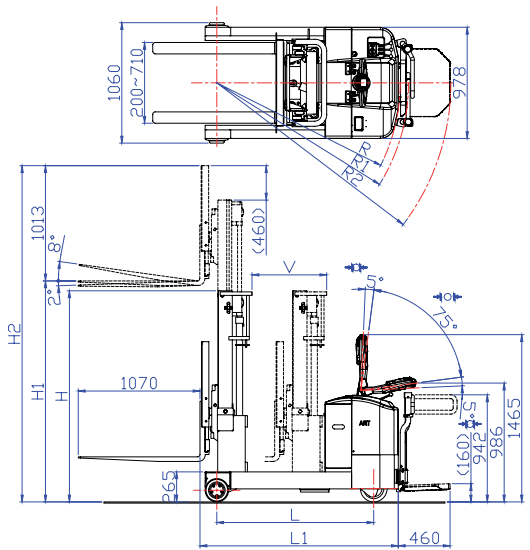
Mast at reaching condition  
It can carry any types of pallets.



Mast at draw back condition it can reduce truck weight, reduce truck length and increase stability.

## ★ ART-10/15/20 Specification ★

Item		ART-10	ART-15	ART-20
★ Lifting				
Rated capacity		1000 kg	1500 kg	2000 kg
Load center		500 mm		
Forks (T x W x L)		40x100x1070 mm		45x100x1070 mm
Lifting speed	loaded	95 mm/s	105 mm/s	80 mm/s
	empty	180 mm/s	180 mm/s	180 mm/s
Lowering speed	loaded	140 mm/s	140 mm/s	140 mm/s
	empty	140 mm/s	140 mm/s	140 mm/s
Travel speed	loaded	5.5 km/h	5.5 km/h	5.5 km/h
	empty	6 km/h	6 km/h	6 km/h
Gradeability	loaded	8 %		
	empty	18 %		
Fork tilting angle (F/R)		2° / 8°		
Weight of truck	with battery	2030 kg	2130 kg	2280 kg
	without battery	1815 kg	1915 kg	2065 kg
★ Wheels				
Fork wheels	dimension	Ø205x70 mm		
	quantity (R/L)	1/1		
	material	PU		
Drive wheel	dimension	Ø235x120 mm		
	material	PU (Rubber is optional )		
★ Battery & Motors				
Battery capacity at 5 hours charge rate		240AH / 24V		
Max. charging current(24 V)		40 A		
AC Drive motor power(24 V)		1.6 kw		
Steering motor power(24 V)		0.4 kw		
Lifting motor power(24 V)		3.5 kw		
Controller		AC Stepless		
★ Steering & brake				
Steering System		Steering Arm		
Steering arc. total		185 degree		
Traveling	Type	Electromagnetic spring pressure		
	Actuated	Drive wheel		
Parking brake	Type	Electromagnetic spring pressure		
	Actuated	Drive wheel		
Alarm Device	Standard	Reverse buzzer		



Model		ART-10	ART-15	ART-20
Item		mm	mm	mm
Truck length	L1	1605	1755	1955
Truck width		978		
Wheel base	L	1230	1380	1580
Total length with draw		2165	2165	2268
Over all length extended		2675	2825	3025
Fork length		1070		
Turning Radius	R	1466	1614	1812
Turning Radius	R1	1539	1687	1885
Turning Radius	R2	1910	2060	2259
Max reach length		510	660	757
Fork wheel width		1060		
Fork adjustable width		200-710		
Height of straddle		265		

MAST TYPES						MAX. FORK HEIGHT (P) (mm)										
		2000	2500	*3000	3500	4000	4500	5000	5500	6000	6350	6500	7000	7200	7500	
DUPLIX MAST TELESCOPIC																
MIN. MAST HEIGHT	H	1610	1860	2110	2360	2610	-	-	-	-	-	-	-	-	-	
MAX. MAST HEIGHT	H2	3073	3573	4073	4573	5073	-	-	-	-	-	-	-	-	-	
DUPLIX MAST HI-LO FULL FREE LIFT																
MIN. MAST HEIGHT	H	1610	1860	2110	2360	2610	-	-	-	-	-	-	-	-	-	
MAX. MAST HEIGHT	H2	3008	3548	4048	4548	5056	-	-	-	-	-	-	-	-	-	
FREE LIFT		995	1285	1535	1785	2043	-	-	-	-	-	-	-	-	-	
TRIPLE STAGE MAST HI-LO																
MIN. MAST HEIGHT	H	-	-	1610	1860	1960	2110	2260	2460	2610	2725	2996	3068	3118	3218	
MAX. MAST HEIGHT	H2	-	-	4008	4558	5082	5548	6006	6578	7056	7408	7509	8053	8253	8553	
FREE LIFT		-	-	995	1045	1369	1535	1693	1865	2043	2165	2210	2345	2445	2545	

· Lifting height over 6500mm, ART-20 length + 150mm ; width + 165mm



## ACS-08/10/15 AC + EPS

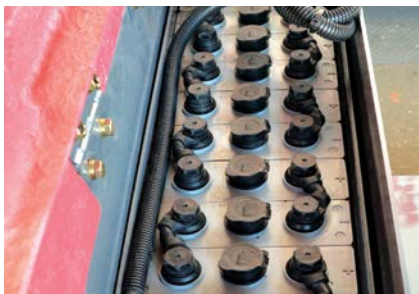
### ADVANCED COUNTERBALANCED WALKIE STACKER (AC SYSTEM) (800KG / 1.0TON / 1.5TONS)

- Electronic Power Steering system (EPS system) very easy to drive
- Advanced AC motor product
- Without carbon brush, reduce service cost
- Save electricity efficiently by 30%
- FRP body cover and battery cover
- Lead-free PU baked enamel coating
- Polyoxymethylene Steering Arm
- No pollution, quiet, safety, durable and reliable
- Adjustable forged forks suitable for any pallets
- Use Germany Hoesch brand section steel to make the high safety mast.
- It can be operated in 2.7 meter width aisle for ACS-08/10
- Back buzzer is a standard function
- Max. fork lifting height between 2 meter and 6 meter
- With a slow drive speed switch for duplex mast HI-LO (3m or above) and triple stage mast HI-LO (3.5M or above)
- With grounding chain with PU drive wheel.
- Easy change battery by side move design.



#### Optional items:

Triple stage, full free lift mast, -35°C cold storage version, foldable side protection guards, shaft type forks, side shift, battery change table...etc. are available as options



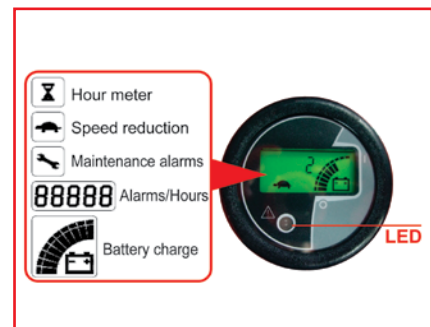
- Powerful Traction Battery



- EPS Steering Arm



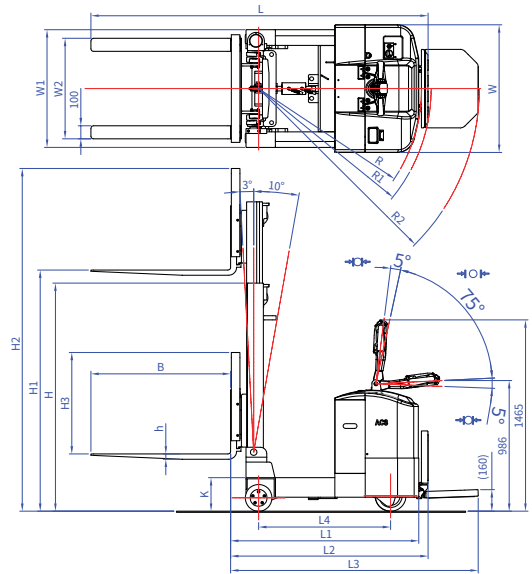
- AC Drive motor



- LED MDI-CAN multifunctional indicator

## ACS-08/10/15 Specification

Item	Model	Unit	ACS-08	ACS-10	ACS-15
Loading					
Capacity		kg	800	1000	1500
Load center		mm	500		
Fork length (T X W X L)		mm	40×100×1070	45×100×1070	
Lifting speed	empty	mm/s	130	130	180
	loaded	mm/s	80	80	105
Lowering speed	empty	mm/s	152	152	140
	loaded	mm/s	160	160	140
Travel speed	empty	km/h	5.5		
	loaded	km/h	6		
Gradeability	empty	%	9		
	loaded	%	18		
Fork tilting (F/R)			3° / 10°	3° / 10°	2° / 8°
Weight	without battery	kg	1400	1684	1800
	with battery	kg	1185	1469	2015
Fork wheels	dimension	mm	Ø205×70	Ø205×70	Ø205×70
	quantity	(L/R)	2/2	2/2	2/2
	material	PU			
Drive wheel	dimension	mm	Ø235×120	Ø235×120	Ø235×120
	material	Rubber (PU is optional)			
Battery (24V)		Ah/5HR	240	240	240
Max. charging current (24V)		A	40	40	40
Motor Power (24V)	AC Drive	kW	1.6		
	Steering	kW	0.4		
	Lifting	kW	2.5	2.5	3.5
Inverter	AC Drive	AC Stepless			
	Steering	Microcontroller			
Steering & brake					
Steering Arm	Lifting/Lowering		Solenoid Valve Button		Hydraulic
	Tilting		Solenoid Valve Button		Hydraulic
Steering Arm		Steering Arm			
Steering arc.total		185°			
Parking brake	Type	Electromagnetic spring pressure			
	Actuated	Drive wheel			
Alarm Device		Reverse anti-collusion button Emergency switch off button Dual headlight			



Item		Unit	ACS-08	ACS-10	ACS-15
Truck length (With forklift & W/O pedal)	L	mm	2585	2705	3080
Truck length (W/O forklift &pedal)	L1	mm	1442	1562	1935
Truck length (W/O forklift &pedal)	L2	mm	1515	1635	2010
Truck length (With pedal &W/O forklift)	L3	mm	1900	2020	2400
Wheel base	L4	mm	1011	1131	1465
Truck width	W	mm	978		
Front wheel width	W1	Mm	902	902	1060
Min Turing Radius (without pedal)	R	mm	1254	1368	1697
Min Turing Radius (when pedal)	R1	mm	1323	1441	1769
Max Turing Radius	R2	mm	1692	1811	2143
Height of Shelves	H3	mm	780		1015
Fork outer width	W2	mm	200~770		
Height of straddle	K	mm	257		265
Height of steering arm		Mm	1465		

MAST TYPES	H1 Loading Heighty (mm)								
	ACS-08 / ACS-10					ACS-15			
	H	2000	2500*	3000	3500	2000	2500*	3000	3500
<b>DUPLEX MAST TELESCOPIC</b>									
MIN MAST HEIGHT	H	1500	1750	2000	2250	1610	1860	2110	2360
MAX MAST HEIGHTY	H2	2825	3325	3825	4325	3060	3560	4060	4560
<b>DUPLEX MAST HI-LO FULL FREE LIFT</b>									
MIN MAST HEIGHT	H					1610	1860	2110	2360
MAX MAST HEIGHTY	H2					3008	3548	4048	4548
MAX FREE LIFT						995	1285	1535	1785

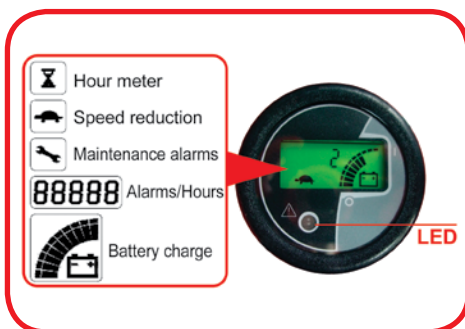
## APS-15/20 AC+EPS

### ADVANCED POWERED PALLET STACKER (AC+EPS) (1.5 TONS / 2 TONS)

- Electronic Power Steering system (EPS system) very easy to drive.
- While turning steering, the drive speed lowering down automatically by 50%.
- With AC driving motor, it can save electricity efficiently by 30% at least, and carbon brushless equipped for easier maintenance.
- Latest AC inverter circuit control system brings stability, power saving, calmness and cleanliness.
- Use Germany HOESCH brand section steel to make the high safety mast.
- Lead- free PU baked enamel painting.
- Max. fork lifting height between 2 meter and 6 meter.
- Straddle can lift 205mm. This stacker can carry 2 pieces of European open pallets at the same time. The driving wheel can move up and down by 45mm.
- Customization for clients' requirements.

#### OPTIONAL SPECIFICATION:

- A: Overall fork width 470/ 685mm
- C: Fork inner width 90/ 305 mm
- D: Fork length 1000/ 1450 mm
- E: Front end length 250/ 400 mm



- LED MDI-CAN multifunctional indicator has many internal functions:  
Indication of battery's state of charge.  
Operating hour meter.  
With CANBUS system, low battery protection alarm and shows all trouble coding for easy service use.

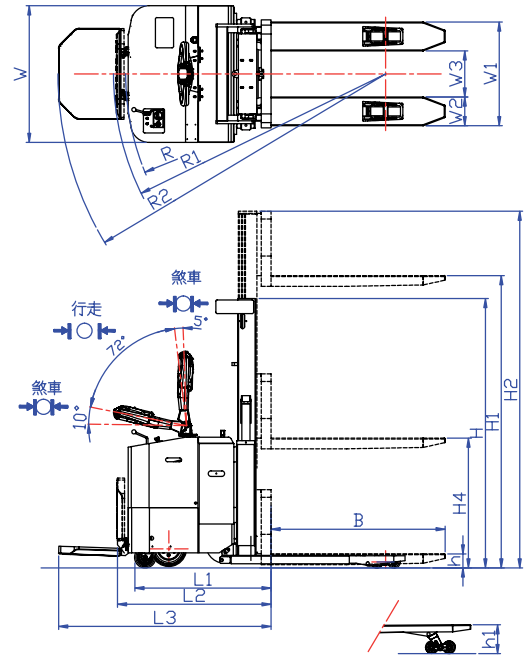


- EPS Steering Arm (Electronic Power Steering)
- Steering Arm can work in 185 degree total arc for extra convenience. Easy-reach buttons for lifting and lowering and the horn are placed in the middle of the Steering Arm. For safety sake, the red colour safety device on top of steering handle, once the operator touches it, the truck will drive to forward direction.



## APS-15/18/20 AC+EPS Specifications

Item			APS-15	APS-20
Lifting				
Rated capacity		kg	1500	2000
Load center		mm	600	
Lifting speed	empty	mm/s	130	100
	loaded	mm/s	100	70
Lowering speed	empty	mm/s	170	
	loaded	mm/s	300	
Driving				
Traveling speed	empty	km/h	6.0	
	loaded	km/h	5.5	
Gradeability	empty	%	16%	
	loaded	%	9%	
Service weight	with battery	kg	1115	1160
	without battery	kg	900	945
Wheels				
Fork wheels	dimension	mm	Ø83×75mm	
	quantity (R/L)		2/2	
	material		PU	
Castor wheels	dimension	mm	Ø140 x 60 mm	
	quantity (R/L)		1/1	
	material		PU	
Drive wheel	dimension	mm	Ø235×120mm	
	material		Rubber (PU is optional)	
	movement up	mm	20	20
	movement down	mm	25	25
Battery and motors				
Battery capacity at 5 hours charge rate		AH/5HR	240AH/24V	240AH/24V
Max. charging current (24V)		A	30	40
AC drive motor power (24V)		KW	1.6	1.6
Lifting motor power (24V)		KW	3.0	3.0
Controller			AC stepless	
Steering & brake				
Steering system		Steering arm		
Steering arc. Total		185 degree		
Parking brake	Type	Electromagnetic spring pressure		
	Actuated	Driving wheel		
Alarm device		Standard reverse buzzer		



APS+EPS		15	20
Item		mm	mm
Fork width	W1	685	
Each fork width	W2	190	200
Fork inner width	W3	305	285
Fork length	B	1150	
Overall truck width	W	902	
Length of body	L1	925	
	L2	1040	
	L3	1435	
Turning radius	R	1710	
	R1	1775	
	R2	2115	
Min. fork height	h	90	
Straddle lift	h1	205	
Each straddle width	-	150	

MAST TYPES		MAX. FORK HEIGHT(mm)								
		APS+EPS-15/20				APS+EPS-15/20				
		2000	2500	3000	3500	4000	4500	5000	5500	6000
<b>DUPLEX MAST TELESCOPIC</b>										
MIN. MAST HEIGHT	H	1540	1790	2040	2290	2540	-	-	-	-
MAX. MAST HEIGHT	H2	2500	3000	3500	4000	4500	-	-	-	-
<b>DUPLEX MAST HI-LO FULL FREE LIFT</b>										
MIN. MAST HEIGHT	H	1510	1760	2010	2260	2510	-	-	-	-
MAX. MAST HEIGHT	H2	2500	3000	3500	4000	4500	-	-	-	-
FREE LIFT	H4	900	1280	1530	1780	2040	-	-	-	-
<b>TRIPLE STAGE MAST HI-LO</b>										
MIN. MAST HEIGHT	H	-	-	1510	1760	1860	2010	2160	2360	2510
MAX. MAST HEIGHT	H2	-	-	3580	4080	4580	5080	5580	6080	6580
FREE LIFT	H4	-	-	990	1040	1360	1530	1690	1860	2040

## APS-10/15/18/20 AC

### ADVANCED POWERED PALLET STACKER (AC SYSTEM) (1 TON / 1.5 TONS / 1.8 TONS / 2 TONS)

- Advanced AC motor truck.
- Suspension drive motor allowing to use the truck on uneven surfaces.
- Without carbon brush, easy maintenance.
- With AC vectorial stepless inverter.
- 30% battery efficiency improvement.
- Quiet, and safe operation.
- Environmental-friendly, durable, reliable truck.
- Electric drive, electric lifting.
- Lead-free PU baked enamel painting.
- Straddle can lift 200mm. This stacker can carry 2 pieces of european open pallets at same time. It also has higher gradeability.
- Body length is 855mm only.
- Ride-on drive, easy handling.
- It can turn in 2.1 meter wide aisle.
- Max. fork lifting height between 2 meter and 6 meter
- With a slow drive speed switch for duplex mast HI-LO (3m or above) and triple stage mast HI-LO (3.5M or above)
- Triple stage, full free lift mast and -35°C cold storage version...etc. are available as options.



Triple Stage Masts



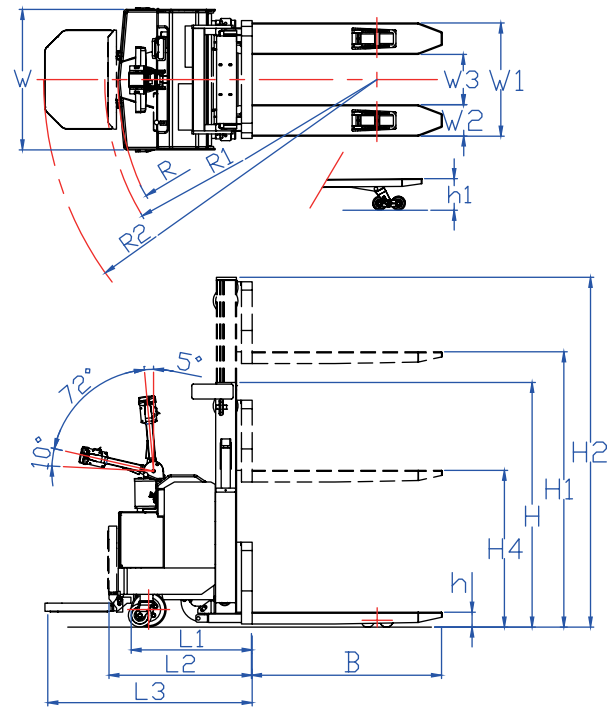
Fixed Straddle



Straddle Lifting

## ★ APS-10/15/18/20 Specifications ★

Item		APS-10	APS-15	APS-18	APS-20
★ Lifting					
Rated capacity		1000 kg	1500 kg	1800 kg	2000 kg
Load center		600 mm			
Max.lifting speed	empty	140 mm/s	156 mm/s	150 mm/s	150 mm/s
	loaded	110 mm/s	100 mm/s	90 mm/s	100 mm/s
Max.lowering speed	empty	110 mm/s	170 mm/s	170 mm/s	60 mm/s
	loaded	570 mm/s	300 mm/s	300 mm/s	300 mm/s
★ Driving					
Travel speed	empty	6.0 km/h			
	loaded	5.5 km/h			
Gradeability	empty	16 %	16 %	16 %	16 %
	loaded	9%	9%	9%	9%
★ Weight of truck					
Service weight	with battery 240 Ah	998 kg	1025 kg	1042 kg	1080 kg
	without battery	783 kg	810 kg	827 kg	865 kg
★ Wheels					
Fork wheels	dimension	ø83x90 mm	ø83x75 mm	ø83x75 mm	ø83x75 mm
	quantity(R/L)	1/1	2/2	2/2	2/2
	material	PU			
Castor wheels	dimension	ø140x60mm			
	quantity(R/L)	1/1			
	material	PU			
Drive wheel	dimension	ø212x70mm			
	material	Standard:Rubber/Opt. PU			
	movement up	15 mm			
	movement down	30 mm			
★ Battery and motors					
Battery capacity at 5 hours discharge rate		180AH/24V	240AH/24V	240AH/24V	240AH/24V
		Other options are available			
Max. charging current		30A/24V	40A/24V	40A/24V	40A/24V
Drive motor power (AC)		1.8kw/24V			
Lift motor power		2.0 kw/24V	3.0 kw/24V	3.0 kw/24V	3.0 kw/24V
Invertor	Travelling	AC Stepless			
	Lifting	Contactor type			
★ Steering & Brake					
Steering system		Steering Arm			
Steering arc. total		185 degree			
Travelling brake	type	Electromagnetic spring pressure			
	actuated part	Drive wheel			
Parking brake	type	Electromagnetic spring pressure			
	actuated part	Drive wheel			



Model(APS)	10	15	18	20
Item	mm	mm	mm	mm
Overall fork width	W1	580	580	580
Each fork width	W2	190	190	200
Fork inner width	W3	200	200	180
Fork length	B	1150	1150	1150
Overall truck width	W	850	850	850
Length of body	L1	795	815	815
	L2	855	875	875
	L3	1235	1255	1255
Turning radius	R	1620	1630	1630
	R1	1680	1690	1690
	R2	2060	2070	2070
Min. fork height	h	90	90	90
Straddle lift	h1	None	205	205
Each straddle width		150	150	150
Straddle outer width		540	540	540
Straddle inner width		240	240	240

Mast Types		Max. fork height(M) mm								
		APS-10/15/18/20				APS-15/18/20				
		2000	2500	3000	3500	4000	4500	5000	5500	6000
Duplex mast telescopic										
Min. mast height	H	1540	1790	2040	2290	2540	--	--	--	--
Max. mast height	H2	2500	3000	3580	4080	4580	--	--	--	--
Duplex mast Hi-Lo										
Min. mast height	H	1510	1760	2010	2260	2510	--	--	--	--
Max. mast height	H2	2500	3000	3580	4080	4580	--	--	--	--
Free lift	H4	990	1280	1530	1780	2040	--	--	--	--
Triple stage mast Hi-Lo										
Min. mast height	H	--	--	1510	1760	1860	2010	2160	2360	2510
Max. mast height	H2	--	--	3580	4080	4580	5080	5580	6080	6580
Free lift	H4	--	--	990	1040	1360	1530	1690	1860	2040

\* These mast types are not available for APS-10.



## PPS-10/15/18/20 POWERED PALLET STACKER (1 TON / 1.5 TONS / 1.8 TONS / 2 TONS)

Option: Forged fork

- Ride-on drive, easy handling.
- Quiet, safety, durable, reliable.
- No pollution.
- Lead-free PU baked enamel painting.
- Electric drive, electric lifting.
- Straddle can lift 200mm. This stacker can carry 2 pieces of european open pallets at same time. It also has higher gradeability.
- Body length is 855mm only.
- It can turn in 2.1 meter wide aisle.
- With a slow drive speed switch for duplex mast HI-LO (3M or above) and triple stage mast HI-LO (3.5M or above)
- Max. fork lifting height between 2 meter and 6 meter, triple stage, full free lift mast, -35°C cold storage version...etc. are available as options.

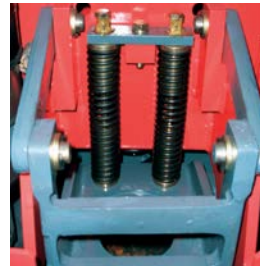


Straddle lifting



Fixed straddle

- Interior-mounted Cushion Absorbers lessen wobbling and prove extra steadiness. When loaded, specially designed hydraulic-mechanical system evens the weight to castor wheels and drive wheel, making Steering Arm light to control, yet enough to turn and climb.



Option: Digital weight scale

- The drive wheel can be moved up and down by 45 mm. The drive wheel can be driven over the rise high and depression with-in 45 mm.



Option: Overhead guard

- Exceptional stepless MOSFET controller effectively provides progressive acceleration, stable operation and consumes less electricity. Resistance-3 controller is also available.

- Use Germany Hoesch brand section steel to make the high safety mast.

- The bright colored coating is composed of a detailed surface treatment, antirusting primer, and lead-free PU baked enamel painting.

This superior painting process withstands harsh working environments and assures a much longer life.

- Firmly-welded steel frame is constructed to preserve structural integrity even upon sustaining super weight.

- All electrically powered driving and lifting not only save manpower and time, but also keep working environments quiet and clean.

- This is a green product.

- Castor wheel under each side of the truck increases balance and prevents turnover as well.

- 2 / 2 Tandem fork wheels(Ø85 mm/3.35") fitted on straddle. It can carry more load without damage.

## OPTIONAL SPECIFICATION:

A : Overall fork width 470/520/685mm

C : Fork inner width 90/140/305mm

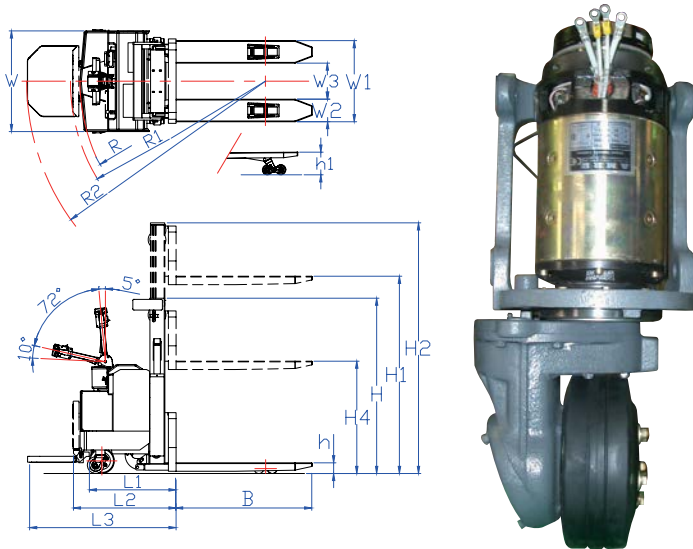
D : Fork length 1000/1300/1450mm

E : Front end length 250/400mm

Model(PPS)	10	15	18	20
Item	mm	mm	mm	mm
Overall fork width W1	685			
Each fork width W2	190	190	190	200
Fork inner width W3	305	305	305	285
Fork length B	1150			
Overall truck width W	850			
Length of body	L1	795	815	815
	L2	855	875	875
	L3	1235	1255	1255
Turning radius	R	1620	1630	1630
	R1	1680	1690	1690
	R2	2060	2070	2070
Min. fork height h	90			
Straddle lift h1	None	205	205	205
Each straddle width	150			
Straddle outer width	540			
Straddle inner width	240			

Mast Types		Max. fork height(M) mm							
		PPS-10/15/18/20				PPS-15/18/20			
		2000	2500	3000	3500	4000	4500	5000	5500
Duplex mast telescopic									
Min. mast height H		1540	1790	2040	2290	2540	--	--	--
Max. mast height H2		2500	3000	3500	4000	4500	--	--	--
Duplex mast Hi-Lo		*	*	*	*				
Min. mast height H		1510	1760	2010	2260	2510	--	--	--
Max. mast height H2		2500	3000	3500	4000	4500	--	--	--
Max. free lift H4		990	1280	1530	1780	2040	--	--	--
Triple stage mast Hi-Lo				*	*				
Min. mast height H		--	--	1510	1760	1860	2010	2160	2360
Max. mast height H2		--	--	3580	4080	4580	5080	5580	6080
Max. free lift H4		--	--	990	1040	1360	1530	1690	1860

\* These mast types are not available for PPS-10.



## ★ PPS-10/15/18/20 Specifications ★

Item		PPS-10	PPS-15	PPS-18	PPS-20
★ Lifting					
Rated capacity		1000 kg	1500 kg	1800 kg	2000 kg
Load center		600 mm	600 mm	600 mm	600 mm
Max.lifting speed	empty	140 mm/s	140 mm/s	150 mm/s	170 mm/s
	loaded	110 mm/s	90 mm/s	90 mm/s	90 mm/s
Max.lowering speed	empty	110 mm/s	210 mm/s	210 mm/s	60 mm/s
	loaded	300 mm/s	600 mm/s	600 mm/s	300 mm/s
★ Driving					
Travel speed	empty	6.0 km/h	6.0 km/h	6.0 km/h	6.0 km/h
	loaded	5.0 km/h	5.0 km/h	5.0 km/h	5.0 km/h
Gradeability	empty	16 %	16 %	16 %	16 %
	loaded	9 %	9 %	9 %	9 %
★ Weight of truck					
Service weight	with battery 240 Ah	960 kg	1025 kg	1042 kg	1080 kg
	without battery	745 kg	810 kg	827 kg	865 kg
★ Wheels					
Fork wheels	dimension	ø83x90 mm	ø83x75 mm	ø83x75 mm	ø83x75 mm
	quantity(R/L)	1/1	2/2	2/2	2/2
	material	PU			
Castor wheels	dimension	ø140x60mm	ø140x60mm	ø140x60mm	ø140x60mm
	quantity(R/L)	1/1	1/1	1/1	1/1
	material	PU			
Drive wheel	dimension	ø212x70mm	ø212x70mm	ø212x70mm	ø212x70mm
	material	RUBBER / PU-Optional			
	movement up	15 mm	15 mm	15 mm	15 mm
	movement down	30 mm	30 mm	30 mm	30 mm
★ Battery and motors					
Battery capacity at 5 hours discharge rate		180AH/24V	240AH/24V	240AH/24V	240AH/24V
Max. charging current		30A/24V	40A/24V	40A/24V	40A/24V
DC Drive motor power		1.5 kw/24V	1.5 kw/24V	1.5 kw/24V	1.5 kw/24V
Lift motor power		2.0 kw/24V	3.0 kw/24V	3.0 kw/24V	3.0 kw/24V
Speed control principle-number of steps (Electronic Mosfet stepless is standard, 3-speed is optional.)		Stepless	Stepless	Stepless	Stepless
		Resistance-3 (option)	Resistance-3 (option)	Resistance-3 (option)	Resistance-3 (option)
★ Steering & Brake					
Steering system		Steering Arm			
Steering arc. total		185 degree			
Travelling brake	type	Electromagnetic spring pressure			
	actuated part	Drive wheel			
Parking brake	type	Electromagnetic spring pressure			
	actuated part	Drive wheel			

1500 Watt Drive Motor provides ample load carrying capacity. Even when fully loaded, the gradient ability still reaches 9%. And special brake system is installed as well. When Steering Arm is operated vertically or horizontally, the micro-sensor is off automatically and the spring electromagnetic pressure works to brake the truck.

### Optional items:

Foldable side protection guards, Longer steering handle, Forged type forks, Stopper for ride-on platform, Removable back rest, -35°C cold storage type, Adjustable straddle lift, Cable control lifting, Non-marking white rubber drive wheel, Vulcollan drive wheel,...etc.

Electric MOSFET stepless controller is fitted with sepex drive motor of 1.5kw/24v.



Riding on the handy platform avoids haste in catching up with the truck and reduces physical fatigue.



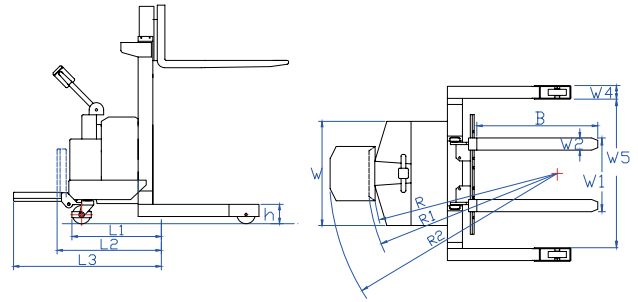
Traction Battery used in the truck endures about 5 years and can be operated normally for 8 hours after 8 hours charge.



## PPS-10W/15W/18W/20W POWERED PALLET STACKER (WIDE STRADDLE VERSION) (1 TON / 1.5 TONS / 1.8 TONS / 2 TONS)



- Wide straddle version and forged fork, suitable for any pallets.
- Straddle wheel 150mm(5.9") or 85mm (3.3") diameters are available for your choice.
- Lifting height: from 2 meters (78.7") to 6 meters (236.2"), triple stage HI-LO is optional.
- With a slow drive speed switch for duplex mast HI-LO (3M or above) and triple stage mast HI-LO (3.5M or above)
  - -35°C cold storage type and special attachments are optional.
  - Any width of straddle size can be produced to meet customers' requirement specifications.
  - Leadless painting

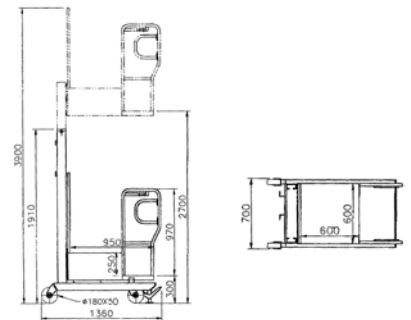


DESCRIPTION		mm
Load center		600
Fork outer width	W1	200-800
Straddle inner width	W5	Palletwidth+100
Each fork width	W2	100
Fork length	B	1070
Body width	W	850
Body length	L1	795
	L2	855
	L3	1235
Turning radius	R	1569
	R1	1620
	R2	1989
Straddle height	h	150 or 85
Each straddle width	W4	85 or 150

OPTIONAL SPECIFICATION		
Straddle outer width :	1300mm, 1400mm	
Fork length	: 900mm, 1070mm, 1220mm	
Straddle wheels to Front end of forks :	250mm, 400mm	

## SPOP-02 SEMI-POWERED ORDER PICKER STACKER (200KG, 440LB)

- Quiet, clean, high quality.
- The picker can pick the goods at 4.5 Meter high.
- Picking height 5.0 And 5.5 Meter are optional.
- Charger of 110V/12V-12A (build-in) is optional.
- Manually propelled, powered lifting order picker stacker.
- The up/down switch is built in the side rail. It is very easy to handle.
- Light weight stacker. It is very easy operated and very durable quality.
- 2 pieces of foot parking brakes.
- -20°C cold storage type is optional.



Model:	SPOP-02
Load capacity	200 kg
Service weight	308 kg
Overall length	1360 mm
Overall width	700 mm
Min. mast height	1910 mm
Max. height	3900 mm
Max. lifting height	2700 mm
Min. stand height	550 mm
Loading stand height	250 mm
Platform overall length	970 mm
Loading stand length	600 mm
Loading stand width	600 mm
Rear wheel	ø180x50 mm
Front wheel	ø180x50 mm
Hand rail height	970 mm
Lifting speed	10-14 M/MIN
Lowering speed	6-9M/MIN
Lifting motor	1.5 KW/12V
Battery	135AH/12V
Charger(220v/110v)(1Phase)	12V-12A



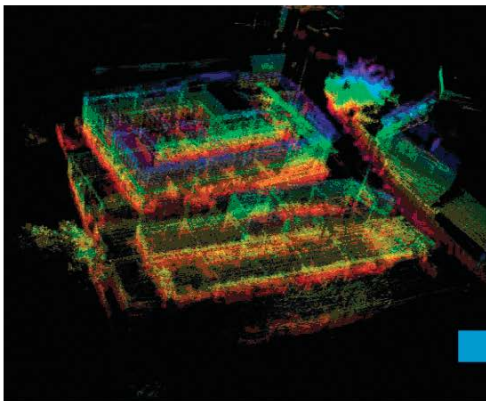
Anti-fall down device, Emergency descend device & Brake safety device are options.

## AGV Unmanned & automatic guide system

- **Automatic initial position**  
Needless to set start point
- **Space height setting**  
The fork lift can be set according to the space
- **3D LiDAR sensor**  
No blind spot
- **SLAM auto navigation and positioning**  
Overcome gallery positioning problem  
Avoid obstacle automatically
- **TOF Camera**  
depth measure  
AI pallet identify
- **Automatic adjust stacker position**  
Automatically turn and following the tilted pallet.
- **Natural navigation**  
Without magnetic stripe/ reflector  
2D Bar Code /High accuracy



(Signal) 3D HD Point Cloud Map



2D Map



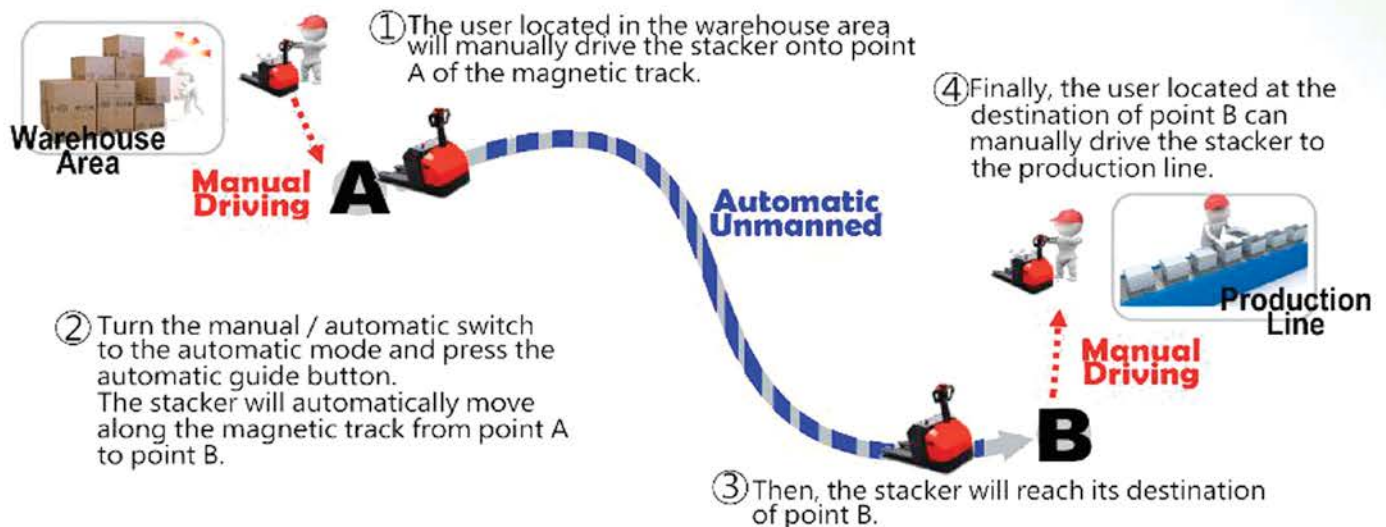


## Electric Stackers

### Unmanned & automatic guide system of material handling

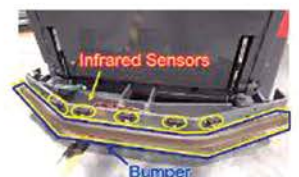
Unmanned-  
New Experience

- **Electric Stackers can move between the warehouse area and production area through the automatic guide system without driver.**



### ● Features of the magnetic sensing guide system

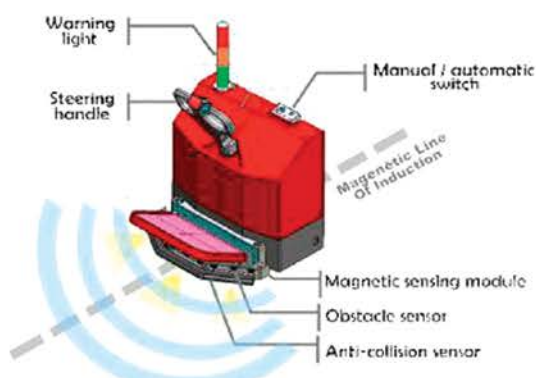
1. Simple to build: the stacker goes automatically wherever the magnetic track has been stuck and installed.
2. Easily adapted for different working environments: the stacker can be set to the mode of the automatic guide operation anywhere the magnetic track has been stuck and installed.
3. Low maintenance cost: with a simple investment at about 1/5 price of the traditional laser guide system, the principal capital invested will be recovered in one year.
4. Unaffected even when the working environment changes.
5. Adapted to install and run in all models of material handling equipment.
6. Load capacity / Grade ability / Lifting capacity are same as those of a normal electric stacker.
7. Convenient to operate with a simple flick of the manual / automatic switch.
8. At a distance of 80 cm from a dangerous situation, the vehicle will slow down automatically; whereas at a distance of 10cm from a dangerous situation, the vehicle will restart to operate only after the obstacle has been removed.



### Mode of automatic driving

With a simple flick of the manual / automatic switch, the stacker will automatically move along the magnetic to the appointed location.

Adapted to install and run in Noveltek's models of ART+EPS, ACS+EPS, APT+EPS and ATT+EPS.



## APT-20/25/30 AC

### ADVANCED POWERED PALLET TRUCK (AC SYSTEM) (2.0 TONS / 2.5 TONS / 3 TONS)

- Advance AC motor truck.
- Brushless , reduce service cost
- With flux AC inverter
- 30% Battery efficiency improvement.
- Hidden caster wheels, improve safety
- Suitable for both open and closed pallets
- Suspension drive motor allowing to use the truck on uneven surfaces.
- Quiet, and safe operation.
- Environmentally, friendly, durable, reliable truck.
- Electric drive, electric lifting.
- This truck has cold version for -35°C cold storage use.
- Lead-free PU baked enamel painting.



Roller Carrier Truck

Microprocessor charger with equalizing function



- A Noveltek Traction Battery provide with the APT pallet truck ensure a full (8 hours) shift to drive cycle.



- With AC Vectorial Stepless MOSFET inverter effectively provides more progressive acceleration, stable operation and consumes less electricity.



- With easy read LED battery display and emergency switch can cut-off all electricity.



- A 1.8 kw AC induction motor filed with an electromagnetic brake. It provides excellent dynamic performance. Fully laden the vehicle achieves a very good 8% grade ability. With the tiller head being in vertical or horizontal position, an electromagnetic brake will hold the truck.



- Polyoxymethylene tiller head provides a 185 degree steer angle. A red safety button will ensure the truck drives forward for improved safety-industrial machinery directive.



- Foldable platform is provided with the APT walkie trucks. accelerating vehicle speed when the driver is on the platform. Platform folds automatically once the driver has stepped off, and the speed will reduce automatically with a slow drive speed switch under the platform.



- Foldable side protection guards (Optional)

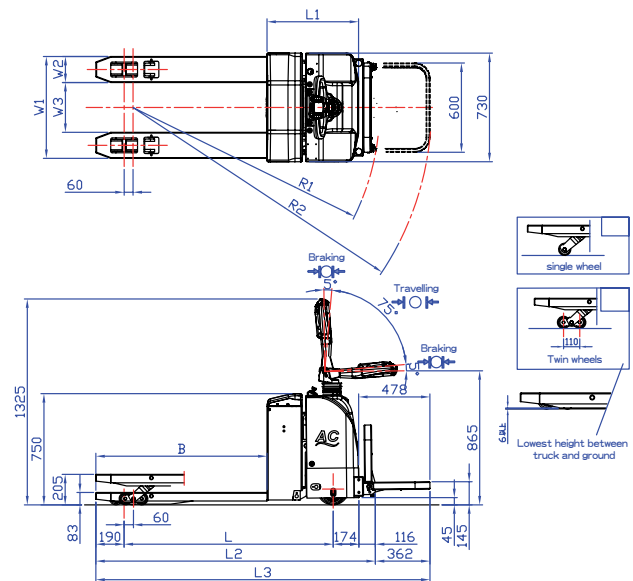


- Special tools for changing wheels (optional)



## APT-20/25/30 AC Specifications

Item		APT-20	APT-25	APT-30
* Lifting				
Rated capacity		2000kg	2500kg	3000kg
Load center		600mm		
Lifting speed	empty	2.0sec		
	loaded	2.5sec	2.5sec	3.0sec
Lowering speed	empty	2.0sec	2.0sec	2.0sec
	loaded	1.9sec	1.9sec	2.0sec
Travel speed	empty	6.0km/h		
	loaded	5.5km/h		
Gradeability	empty	18%		
	loaded	8%		
Weight (W/O battery)		480kg		490kg
* Wheels				
Fork wheels	dimention	Standard	ø83 x 75mm(Standard)	
	quantity(R/L)		2 / 2	
	material		PU	
	dimention	Optional	ø83 x 90 mm	
	quantity(R/L)		1 / 1	
	material		PU	
Caster wheels	dimention		ø140 x 60mm	
	quantity(R/L)		1 / 1(R/L)	
	material		PU	
Drive wheel	dimention		ø212 x 70 mm	
	material	Standard	Rubber	
		Optional	PU	
	Movement up		15mm	
	Movement down		30mm	
* Battery & Motors				
Battery capacity at 5 hours discharge rate		180AH / 24V		240AH / 24V
		Traction battery		Traction battery
		Other options are available		
Max. charging current		30A / 24V		40A / 24V
AC Drive motor power		1.8kw / 24V		
Lift motor power		2.5kw / 24V		
Invertor	Travelling	AC Stepless		
	Lifting	Contactor type		
* Steering & Brake				
Steering system		Steering arm		
Steering Arc. total		185 degrees		
Travelling brake	Type	Electronmagnetic spring pressure		
	Actuated part	Drive wheel		
Parking brake	Type	Electronmagnetic spring pressure		
	Actuated part	Drive wheel		



Model		APT-20	APT-25	APT-30
Item		mm	mm	mm
Overall fork width	W1	685		
Each fork width	W2	175		
Fork inner width	W3	335		
Fork length	B	1150		
Max. fork height		205		
Min. fork height		83		
Overall height		1325		
body length	L1	620	620	695
Overall width		730		
Overall length sub step is folded	L2	1886		1961
Overall length sub step is opened	L3	2248		2323
Wheel base	L	1406		1481
Min. turning radius	R1	1658		1733
Max. turning radius	R2	2005		2078
Distance of fork wheels		110		
Distance from center of fork wheels to the front of fork		190		
When the forks are at the lowest				
When the forks are at the highest		205		
Platform	Length	478		
Platform	Width	600		
Height of platform to ground	H	145		
Height of platform to ground	L	45		
Distance from battery to ground		750		

### Optional items:

Foldable side protection guards, Longer steering handle, Stopper for ride-on platform, Removable back rest, -35°C cold storage type, 65mm low profile fork height, and 75mm middle profile fork height, Non-marking white rubber drive wheel, Polyurethane drive wheel, Hydraulic restrictor valve(reduce lowering speed), DC drive motor & controller...etc.

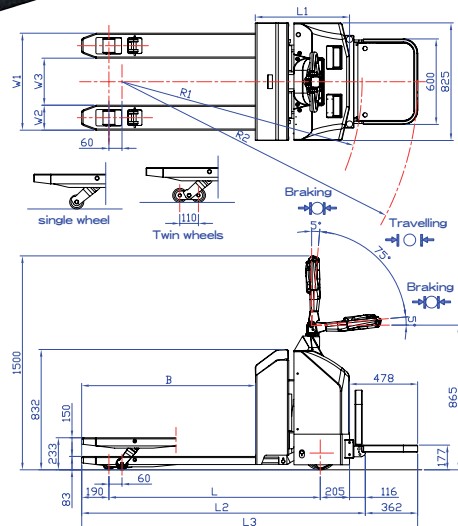
### OPTIONAL SPECIFICATIONS:

W1: Overall fork width	470mm/18.50"	520mm/20.47"	685mm/27"
W2: Fork inner width	120mm/4.72"	170mm/6.69"	335mm/13.19"
L : Fork length	1000mm/39.37"	1300mm/51.18"	1450mm/57.09"

## APT-20/30+EPS Electronic Power Steering

There are many functions on LED MDI-CAN multifunctional indicator(built-in)

- Indication of battery state of charge
- Operating hour meter
- With CANBUS system, low battery protection alarm shows all trouble coding for easier service use.
- EPS Steering Arm(Electronic Power Steering)  
Steering Arm can work at 185 degree total arc for extra convenience.
- With AC driving motor, it can save electricity efficiently by 30% at least, and carbon brushless equipped for easier maintenance.
- While steering, speed lowering down automatically by 50%.
- Latest AC inverter circuit control system brings stability, power saving, calmness and cleanliness.
- Adjustable speed setting.
- With bright colored coating composed of a defined surface treatment, anti-rust primer and lead-free PU baked enamel painting.
- Professional long-term traction battery for lift-truck use only.
- Customization for clients' requirements.



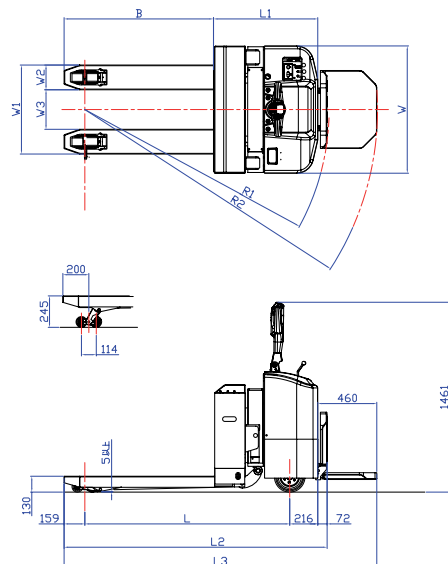
Item	APT-20	APT-30
Rated capacity	2000 KG	3000 KG
Load center	600 mm	600 mm
Lifting speed	empty 2.5 sec loaded 3.0 sec	empty 2.5 sec loaded 3.0 sec
Lowering speed	empty 4.0 sec loaded 2.3 sec	empty 4.0 sec loaded 2.3 sec
Travel speed	empty 6.0 km/h loaded 5.5 km/h	empty 6.0 km/h loaded 5.5 km/h
Grade ability	empty 18% loaded 8 %	empty 18% loaded 8 %
Weight	w/o battery 593 KG with battery 770 KG	603 KG 818 KG
Fork wheels	Ø83x107 mm x2 (PU)	Ø83x75mm x4 (Twin-wheel)
Drive wheel	Ø235x120 mm x1 (standard: PU ; option: rubber)	
Castor Wheel	Ø102x63 mm x2 (solid)	
Battery	180AH/24V	240AH/24V
Charger	30A/24V (Single Phase)	40A/24V (Single Phase)
Drive motor power	1.6 KW AC	1.6 KW AC
Lift motor power	2.5 KW	
Controller Driving Lifting	AC Stepless Contactor	
Steering motor power	400W	
Inverter	AC Stepless	
Parking brake	Electromagnetic spring pressure	

Item		APT-20	APT-30
Overall fork	W1	680 mm	680 mm
Each fork width	W2	175 mm	175 mm
Fork inner width	W3	330 mm	330 mm
Fork length	B	1150 mm	1150 mm
Max. fork height		233mm	233 mm
Min. fork height		83 mm	83 mm
Overall height		1500 mm	1500 mm
Overall width		825 mm	825 mm
Overall length	L1	657 mm	724mm
Wheel base	L	1412 mm	1487 mm
Overall length sub step is folded	L2	1923 mm	1993 mm
Overall length sub step is open	L3	2285 mm	2355 mm
Min. turning radius	R1	1697 mm	1767 mm
Turning radius	R2	2044 mm	2115 mm
Pedal Length		478mm	478mm

## APT-50/70 AC+EPS ADVANCED POWERED PALLET TRUCK (AC SYSTEM)(5.0 TONS)(HEAVY DUTY)



- LED MDI-CAN multifunctional indicator has many internal functions:  
Indication of battery's state of charge.  
Operating hour meter.  
With CANBUS system, low battery protection alarm and shows all trouble coding for easy service use.
- EPS Steering Arm. (Electronic Power Steering)  
Steering Arm can work in 185 degree total arc for extra convenience.
- With AC drive motor can save electricity efficiently by 30% and carbon brushless, easy maintenance.
- Powerful Traction Battery
- With bright colored coating composed of a detailed surface treatment, anti-rust primer, and lead-free PU baked enamel painting.



Item		APT-50	APT-70
Rated capacity		5000 KG	7000 KG
Load center		600 mm	600 mm
Lifting speed	empty	8.0 sec	7.0 sec
	loaded	6.0 sec	6.0 sec
Lowering speed	empty	9.0 sec	9.0 sec
	loaded	9.0 sec	6.0 sec
Travel speed	empty	5.5 km/h	6.0 km/h
	loaded	4.5 km/h	4.0 km/h
Grade ability	empty	17 %	18 %
	loaded	6 %	7 %
Weight	w/o battery	1000 KG	1570 KG
	with battery	1215 KG	2000 KG
Fork wheels		Ø83x75 mm x2 (PU)	Ø140x60 mm x2 (PU)
Drive wheel		Ø235x120 mm x1 (standard: PU ; option: rubber)	
Castor Wheel		Ø102x63 mm x2	
Battery		240AH/24V	240AH/48V
Charger		40A/24V (Single Phase)	60A/48V (3 Phase)
Drive motor power		1.6 KW AC	4.0 KW
Lift motor power		2.5 KW	
Steering motor power		400W	
Inverter		AC Stepless	
Parking brake		Electromagnetic spring pressure	

Item		APT-50	APT-70 (Customized)
Overall fork	W1	685 mm	1082 mm
Each fork width	W2	190 mm	350 mm
Fork inner width	W3	305 mm	382 mm
Fork length		1150 mm	1700 mm
Max. fork height		245 mm	260 mm
Min. fork height		130 mm	150 mm
Overall height		1461 mm	1532 mm
Overall width	W	980 mm	1100 mm
Overall length (w/o sub step)	L1	794 mm	1034 mm
Wheel Base	L	1569 mm	1978 mm
Overall length sub step is close	L2	2016 mm	2806 mm
Overall length sub step is open	L3	2404 mm	3194 mm
Min. turning radius	R1	1881 mm	2233 mm
Turning radius	R2	2254 mm	2583 mm
Pedal Length		460mm	460mm

Option items:

Fork length: 2600mm / fork width: 1000mm  
back buzzer, beacon light, stainless steel truck body, -35°C cold storage type...etc.

### APT-20+EPS

**(Electric Power Steering) (2.0 TONS)  
Floating Fork Pallet Truck**

The advanced floating fork design effectively solve problem of entry - into the closed plastic pallets.



### APT-20H+EPS+SUSPENSION

**High Speed+Suspension Pallet Truck(2T)**

- Newest developed high speed & suspension design with 9 km/h speed which is 50% faster than normal pallet truck to accommodate logistic warehousing industry.
- Suspension system 30mm.
- Foldable side guard provides all-around protection.
- EPS steering arm can work at 185 degree total arc for extra convenience.





## EPT-15 ELECTRIC PALLET TRUCK

- Light Body, suitable for running in narrow space.
- Standard forks, suitable for most pallets.
- Stepless speed-adjustment system.
- Human dynamics steering arm for convenient and safe control.
- Multiple safety devices for avoiding accident effectively.
- Artificial intelligence electricity protection with low-voltage protection.
- Built-in recharger for convenient charging.

Optional: fork width:685mm/520mm

Fork length:1150mm/1220mm



Front cover design for easily changing battery



Strong truck frame with reinforced fork structure.

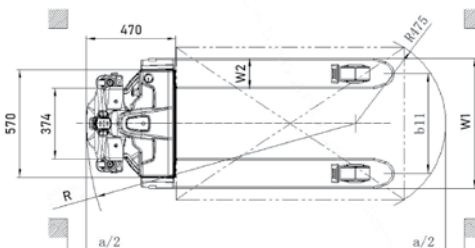
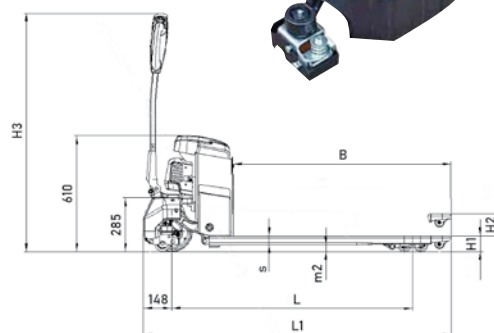


Robust metal shell protecting electric motor and wheels avoids hurting of foot.



Hi-quality Curtis controller.

Model		EPT-15A
LIFTING		
Load Capacity		1500kg
Load Center		600mm
DRIVING		
Traveling speed	Empty	4.5Km/h
	Loaded	4.0Km/h
Gradeability	Empty	10 %
	Loaded	4 %
BATTERY AND MOTORS		
Battery		65/12V×2
Driving Motor(DC)		0.45kW/24V
Lifting Motor(DC)		0.80kW/24V
Speed control		Stepless
Charger		24V/8A/220V/1 Phase
STEERING AND BRAKE		
Steering System		Steering Arm
Steering arc. total		185°
Brake		Electromagnetic Spring
Operation Type		Walking
WHEEL		
Driving Wheel	Size	ø220×70mm
	Material	PU
Castor Wheel	Size	ø80×30mm
	Quantity	1/1(L/R)
	Material	PU
Fork Wheel	Size	ø80×70
	Quantity	1/1
	Material	PU



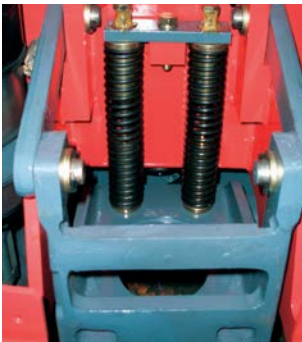
EPT-15A SIZE			
Overall length(with fork)	mm	l1	1660
Overall width	mm	b1	705
Turning Radius	mm	wa	1460
Fork length	mm	l	1150
Load Center	mm		600
Body length	mm	l2	510
Each fork width	mm	e	160
overall fork width	mm		685
Min fork height	mm	h13	80
Max fork height	mm		195
Weight	Kg		190

## PPT-20V/25V/30V Full-Electric Pallet Truck



**TAIWAN  
REWARDED 2012 INDUSTRIAL  
AESTHETICS VIRTUOSO.**

- Especially designed in accordance with idea of aesthetic expertise, it works both functional and aesthetical performances perfectly.
- Strong-shaped appearance with extra loading spaces and file holders
- Stable, mighty driving and lifting motors.
- Unique pump-oil circulator with overloading protection system.
- Hi-tech electric control system with the optional AC or DC one.
- Cold version for -35°C cold storage application.
- Customized model for particular application.



Special Shock-proof  
Suspension system for best  
Stability and balance while  
driving and controlling.



Micro-processor recharger



• Reversing safety switch

• Emergency Stop

• File folder

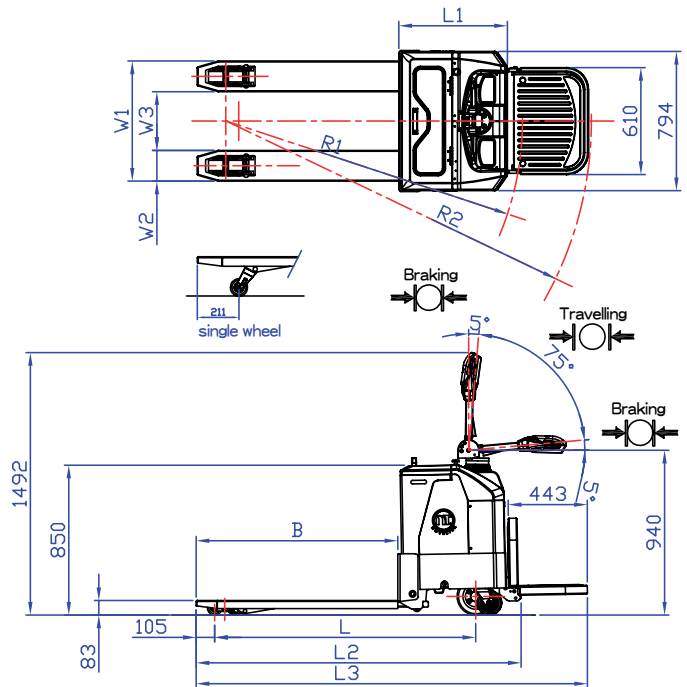
• Aesthetic Dashboard

• Extra placing space

Nitrogen-cylinder  
fordable pedal

## PPT-20V/25V/30V Specifications

Item		PPT-20V	PPT-25V	PPT-30V
lifting				
Rated Capacity(kg)		2000	2500	3000
Load Center(mm)		600		
Max lifting Speed(sec)	empty	1.8		2.1
	loaded	3.0		3.5
Max lowering speed(sec)	empty	5.0		
	loaded	1.4		1.5
Driving				
Travel Speed (km/h)	empty	6.0		
	loaded	6.0		5.5
Gradeability (%)	empty	18		
	loaded	8		7
Weight of truck				
Service weight	W/o Battery	480kg		490kg
Wheels				
Fork wheels	Size	Ø85×75mm(Standard)		
	Quantity	2/2		
	Materials	PU		
Castor wheels	Size	Ø140×60mm(Standard)		
	Quantity	1/1		
	Materials	PU		
Drive Wheels	Size	Ø212×75mm		
	Material	Rubber		
	Materials	PU(Optional)		
Battery and motor				
Battery capacity at 5-hour discharging		180AH/24V		240AH/24V
		Other options available		
Max charging current		30A/24V		40A/24V
Driving motor AC/DC 24V		1.8kw/1.5kw		
Lifting motor		2.5kw/24V		
Speed control		Stepless AC or DC(Speed adjustable)		
Steering and Brake				
Steering system		Steering Arm		
Steering arch total		185"		
Travel brake	Model	Electromagnetic Spring		
	Actuated part	Driving wheel		
Park brake	Model	Electromagnetic Spring		
	Actuated part	Driving wheel		



PPT-V Model		20	25	30
Item		mm		
Overall fork width	W1	685		
Fork width	W2	175		190
Fork inner width	W3	335		305
Fork length	B	1150		
Max. fork height		200		
Min. fork height		83		
Overall height		1916		
Overall width		805		
Length of body	L1	677		752
Length of car(w/o pedal)	L2	1911		1919
Length of car(w/ pedal)	L3	2270		2345
Turning radius	R1	1777		1785
	R2	2124		2132
Distance of fork wheels	L	1430		1438



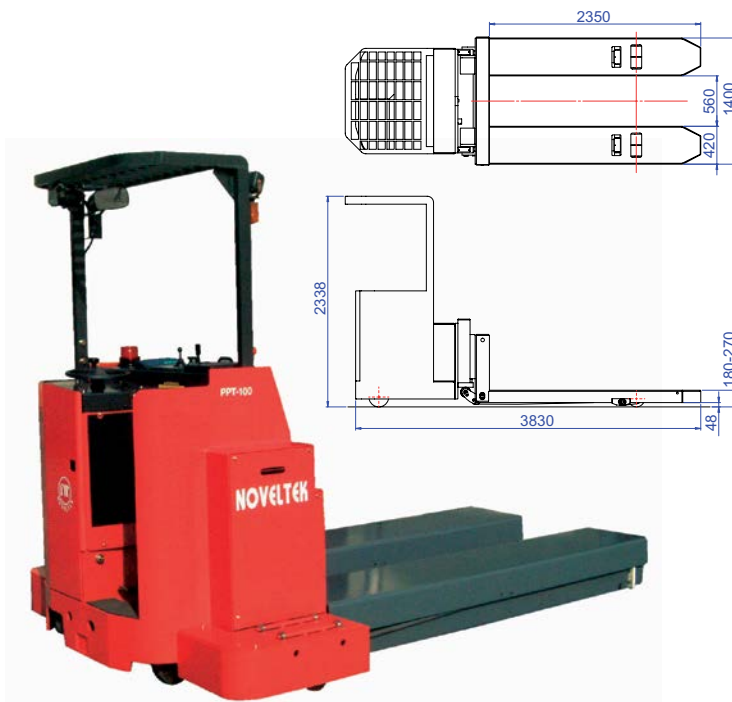
Original European  
Battery Duration  
for at least 5-year  
Dischargeable at  
least 1500 times  
High capacity;  
8-hour operation  
after 8-hour  
recharge



DC Motor:  
High Power  
and torque



AC Motor:  
Power saving  
without  
carbon brush;  
economical  
maintenance



## PPT-80/100/150 POWERED PALLET TRUCK (8.0 TONS / 10.0 TONS / 15.0 TONS)

Item	PPT-80	PPT-100	PPT-150
Rated Capacity	8,000 KG	10,000 KG	15,000 KG
Fork Lifting Height	180~270 mm	285~385 mm	
Overall Length	3830 mm		
Overall Height	2338 mm		
Fork ( L×W)	2350 × 1400 mm (As required)		
Speed Control	Stepless		
Brake	Mechanism		
Drive Wheel *	Ø300×150 mm (Rubber)		
Fork Wheel *	Ø204×76 mm × 6 Pcs (PU)		
Castor Wheel *	Ø127×80 mm × 2 Pcs (PU) (1/1)		
Battery	400 AH/48V	480 AH/ 48V	
Charger	220V /80A ( 3 Phase)		
Service Weight	3500 KG	3800KG	4000 KG
Remark	Fork can be customized to platform as required.		

## PPT-18/20/25/30/40

### POWERED PALLET TRUCK (1.8 TONS / 2 TONS / 2.5 TONS / 3 TONS / 4 TONS)

- Ride-on drive, easy handling.
- Quiet, safety, durable, reliable.
- No pollution.
- Electric drive, electric lifting.
- Lead-free PU baked enamel painting.
- When lifting, forks raise alone without battery, thus, the power is economically saved.
- Forks can lift up to 205mm. It can carry open pallet or closed pallet.
- 2 pcs of the hydraulic lifting cylinders are built in right and left sides. It lifts very stable and much better than the single hydraulic lifting cylinder product.
- 2 pcs of the strong castor wheels are fixed at right and left sides. This truck doesn't have any balance problems when turn a circle.
- Suspension drive motor and wheel can move up and down by 45mm. This truck has a very powerful climbing ability. This mechanism is controlled by 3 springs.
- Emergency handle can cut-off all electricity.
- This truck has cold version for -35°C cold storage use.
- Leadless painting

\* Reference dimension only; size is changeable according different model







## ★ PPT-18/20/25/30/40 Specifications ★

Item		PPT-18	PPT-20/25	PPT-30	PPT-40
★ Lifting					
Rated capacity		1800 kg	2000/2500 kg	3000 kg	4000 kg
Load center		600 mm	600 mm	600 mm	600 mm
Max.lifting speed	empty	1.8 sec	1.8 sec	3.2 sec	3.9sec
	loaded	3.0 sec	3.0 sec	4.3 sec	4.7 sec
Max.lowering speed	empty	5.5 sec	5.5 sec	8.5 sec	7.0 sec
	loaded	3.0 sec	3.0 sec	4.4 sec	4.3 sec
★ Driving					
Travel speed	empty	7.0 km/h	6.0 km/h	6.0 km/h	6.0 km/h
	loaded	5.0 km/h	5.5 km/h	5.0 km/h	4.5 km/h
Gradeability	empty	15 %	15 %	18 %	18 %
	loaded	8 %	8 %	7 %	6 %
★ Weight of truck					
Service weight	with battery	404 kg	717 kg	782 kg	800 kg
	without battery	380 kg	542 kg	567 kg	585 kg
★ Wheels					
Fork wheels	dimension	ø83x90 mm	ø83x75 mm	ø83x75 mm	ø83x75 mm
	quantity(R/L)	1/1	2/2	2/2	2/2
	material	PU			
Castor wheels	dimension	ø140x60mm	ø140x60mm	ø140x60mm	ø140x60mm
	quantity(R/L)	1/1	1/1	1/1	1/1
	material	PU			
Drive wheel S:Rubber O:PU	dimension	ø212x70mm	ø212x70mm	ø212x70mm	ø212x70mm
	material	rubber	rubber	rubber	rubber
	movement up	15 mm	15 mm	15 mm	15 mm
	movement down	30 mm	30 mm	30 mm	30 mm
★ Battery and motors					
Battery capacity at 5 hours discharge rate		100AH/12Vx2	180AH/24V	240AH/24V	240AH/24V
		Other options are available			
Max. charging current		20A/24V	30A/24V	40A/24V	40A/24V
DC Drive motor power		1.0 kw/24V	1.5 kw/24V	1.5 kw/24V	1.8 kw/24V
Lift motor power		2.0 kw/24V	2.0 kw/24V	2.0 kw/24V	2.0 kw/24V
Speed control principle-number of steps	Resistance-3		Stepless	Stepless	Stepless
	Stepless (Optional)	Resistance-3	Resistance-3	Resistance-3	Resistance-3
★ Steering & Brake					
Steering system		Steering arm			
Steering arc. total		185 degree			
Travelling brake	type	Electromagnetic spring			
	actuated part	Drive wheel			
Parking brake	type	Electromagnetic spring			
	actuated part	Drive wheel			

1500 Watt Drive Motor provides ample load carrying capacity. Even when fully loaded, the gradient ability still reaches 9%. And special brake system is installed. When Steering Arm is vertical or horizontal, the microsensor is off and the spring electromagnetic pressure works to brake the truck.

### Optional items:

Foldable side Protection guards, Longer steering handle, Stopper for ride-on platform, Removable back rest, -35°C cold storage type, 65mm low profile fork height, and 75mm middle profile fork height, Non-marking white rubber drive wheel, Polyurethane drive wheel, High speed drive motor up to 9.0 km/h...etc.

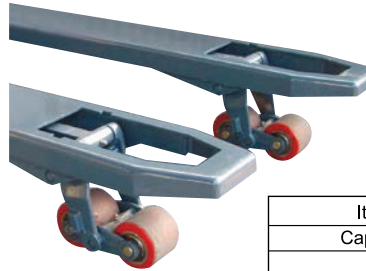
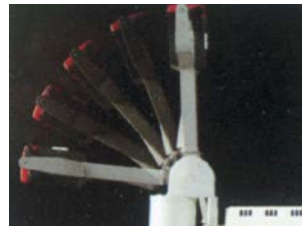
- The bright colored coating is composed of a detailed surface treatment, anti-rusting primer, and baked enamel finish. This superior painting process withstands harsh working environments and assures a much longer life.
- All electrically powered driving and lifting not only save human energy and time, but also keep working environments quiet and clean.
- Firmly-welded steel frame is constructed to preserve structural integrity even upon sustaining super weight. Riding on the handy platform avoids haste in catching up with the truck and reduces physical fatigue.



Castor Wheel under each side of the truck increases balance and prevents turnover as well.

Steering Arm can work in 185 degree total arc for extra convenience. Easy-reach buttons for lifting and lowering and the horn are placed in the middle of the Steering Arm. For safety sake, the red colour safety device on top of steering handle, once the operator touches it, the truck will drive to forward direction. Those operator-oriented designs are what this PPT different from other competitive trucks.

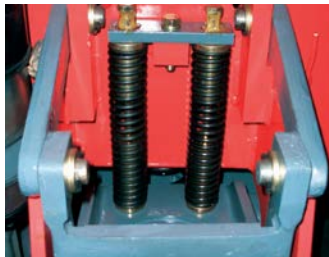
2/2 tandem fork wheels(83mm/3.27") fitted on forks carry more load without damage.



## OPTIONAL SPECIFICATIONS:

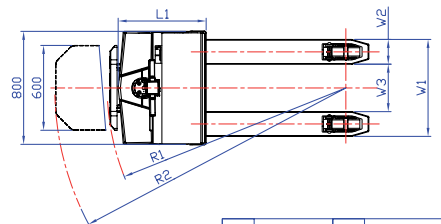
W1: Overall fork width	470mm/18.50"	520mm/20.47"	685mm/27"
W2: Fork inner width	120mm/4.72"	170mm/6.69"	335mm/13.19"
L : Fork length	1000mm/39.37"	1300mm/51.18"	1450mm/57.09"

Items	Unit	PPT-20L	PPT-20S
Capacity	kg	2000	2000
Travel	Laden	km/h	5.0
	Unladen	km/h	6.0
Lift Speed	Laden	sec	3.5
	Unladen	sec	2.5
Motors	Traction	kw	1.5
	Hydraulic	kw	2.0
Control System	Traction	Stepless	Resist-3
	Hydraulic	Contactor	Contactor



Interior-mounted Cushion Absorbers lessen wobbling and prove extra steadiness.

When loaded, specially designed hydraulic-mechanical system evens the weight to castor wheels and drive wheel, making Steering Arm light to control, yet enough to turn and climb.



Resistance-3 controller

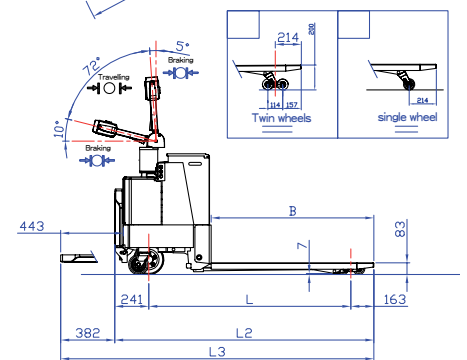


Stepless MOSFET Controller (Optional)



Traction Battery used in the truck endures about 5 years and can be operated normally for 8 hours after 8 hours charge. 2 pcs of the hydraulic lifting cylinders lift forks and goods only. They are very stable at both sides.

When lifting, forks raise alone without battery lifting together; thus, the power is economically saved.

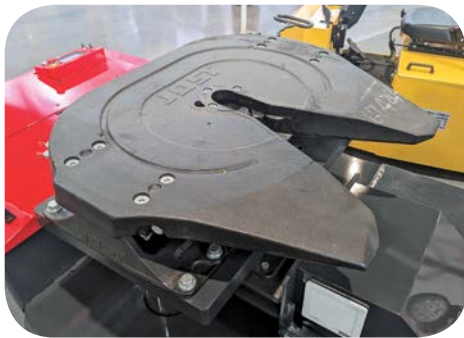
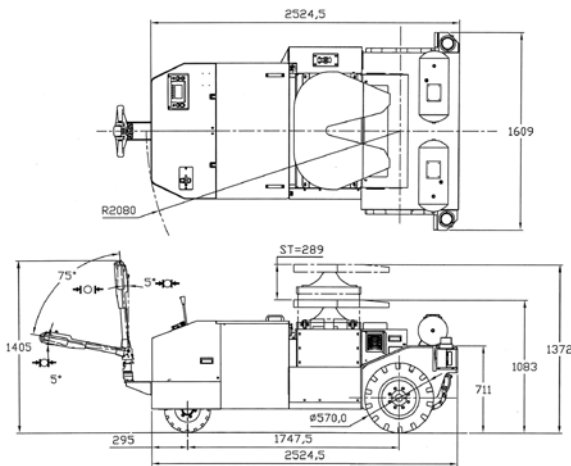


Model(PPT) Tons	18	20/25	30	40
Item	mm	mm	mm	mm
Overall fork width (W1)	580	580	580	580
Each fork width	175	175	190	190
Fork inner width (W3)	230	230	200	200
Fork length (L)	1150	1150	1150	1150
Max. fork height	200	200	200	200
Min. fork height	83	83	83	83
Front end length	170	60	60	60
Overall height	1400	1400	1400	1400
Overall width	800	800	800	800
Turning radius (R2)	1585	1660	1667	1679
(R1)	-	2057	2064	2076
Length of Body (L2)	1429	1429	1435	1447
W heel Base (L)	1833	1833	1840	1852
Body length (w/pedal) (L3)	2215	2215	2222	2233
Distance of fork wheels	85	200	200	200

## CTT-160

### ADVANCED POWERED CONTAINER TOW TRUCK

- Max Towing Capacity : 16,000KG (16 TONS)
- The best choice for container scheduling needs
- Hydraulic trailer pan lift system
- Standard equipped with air duct air brake function of container Tow Truck
- Electronic Power Steering system (EPS system), very easy to drive
- European original imported battery, long lasting
- Made In Taiwan, Quality Assurance



With air duct air brake function of container Tow Truck



Efficiency adjust cargo container position

#### CTT-160 Model

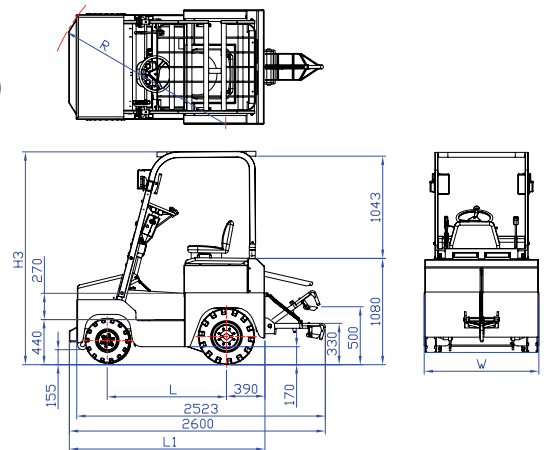
Max Towing Capacity	16000kg (16 Tons)	
Max.Travel Speed	Loaded	2.0km/h
	Empty	3.0km/h
Gradeability	Loaded	8%
	Empty	14%
Overall Dimensions Size	L2820mm W1609mm	
Steering system	steering arm + EPS	
Turning Radius	2540mm	
Tow Truck Tray Lift Height	Min : 895mm	
	Max : 1190 mm	
Air Pressure Pump	12V/5HP Exhaust Volume 420L/min Empty Barrel Capacity 58L	
Motor Power	Drive Motor	10KW/48V
	Lift Motor	12KW/48V
	Steer Motor	0.4KW/48V
Battery	320Ah/48V European Original Imported Battery	
Steering wheel	size	Ø380×155 mm
	material	slip-resistant PU
Steering wheel	size	23×10-12
	material	PU
Brake	Host	Electromagnetic spring pressure brake
	Cargo counter truck	pneumatic brake
Standard Equipment	EPS Electronic Power Steering 、 Anti-Slip Rubber Wheels 、 External Charger	
Safety Equipment	Reversing Anti-Collision Button 、 Emergency Power-Off Button 、 LED-Warning Light 、 Driving Buzzer	



## ABT-160

### AC ELECTRIC TOW TRUCK(4 WHEELS) (AC SYSTEM) (8 TONS / 16 TONS)

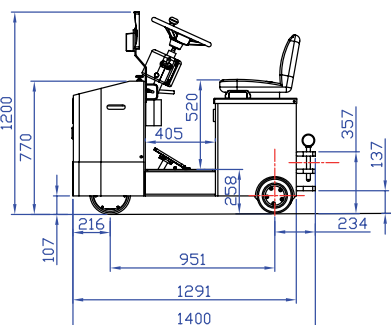
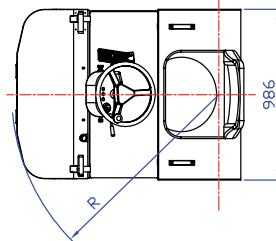
- High quality AC drive motor.
- Power steering on front wheels.
- Power drive on rear wheels.
- Very easy operate.
- Very strong towing force, it can tow 16 tons' trolley on normal floor, it can tow 8 tons' trolley over ramp.
- Tow hook at rear.
- AC stepless electric inverter.
- Microprocessed charger with equalizing function.
- Hydraulic foot brake.
- Mechanical hand parking brake.
- Stable hydraulic power steering.
- Adjustable and cushion seat with seat belt and a safety switch in this seat.
- Lead-free PU baked enamel painting.



Towing capacity		16000 KG (At flat floor)
		8000 KG ( with 8% gradeability)
Travel speed	Loaded	8 km/h
	Empty	13 km/h
Gradeability	Loaded	8 %
	Empty	24 %
Truck weight	With Battery	2000 KG
Wheel base	L	1220 mm
Overall length	L1	1990 mm (w/o towbar)
Overall height	H3	2170 mm
Overall width	W	1170 mm
Tow bar height		500 mm ( or customized)
Turning radius	R	1860 mm
Drive tires ( Rear)		6.5-10
Steering tires (Front)		5.00-8
Battery (5 HRS)		400 AH/48V
Charger		220V/48V-80A
AC Drive motor (48V)		8 KW
Power steering motor		0.8KW
Brake		Electromagnetic spring pressure
Hook		Pin type ( or customized)
Standard Equipment		Head Light, Back Light, Signal Light, Rear Mirror, Back Buzzer, Horn

## ATT-60SW

### ADVANCE TOW TRUCK (STEERING WHEEL) (AC SYSTEM) (6 TONS)



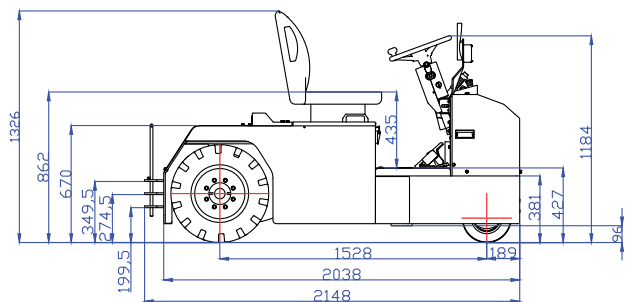
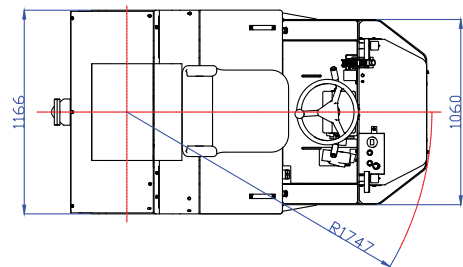
Item	ATT-60	
Towing	6000 kg (at flat floor)	
	3000 kg (with 8% gradeability)	
Travel speed	loaded	3.2 km/h
	empty	8.1 km/h
Grade ability	loaded	9 %
	empty	17 %
Truck weight	w/o battery	700 kg
	with battery	915 kg
Loading wheels	Ø212x70 mm (PU)	
Drive wheel	Ø235x120 mm (rubber) Solid	
Battery(5hrs)	240AH/24V	
Charger	220V/24V-40A	
Drive motor	2.0 kw/24V (AC)	
Controller	AC stepless	
Brake	Electromagnetic spring pressure brake	
Hook	Pin type (or customized)	
Standard equipment	Head light, rear mirror, back buzzer, horn	



## ATT-60 AC

### AC ELECTRIC TOR TRUCK (6 TONS)

- Max tow capacity: 6Tons
- New AC seat-mounted Tow truck
- Steering wheel cockpit, reducing operator burden
- Larger wheel design for adapting environment
- Faster driving speed up to 12km/h in all-loaded
- 48V voltage with longer operation time and stronger torque
- Power steering on front wheels
- Power drive on rear wheels
- Waterproof lv : IP\*4
- Special hooks and customization



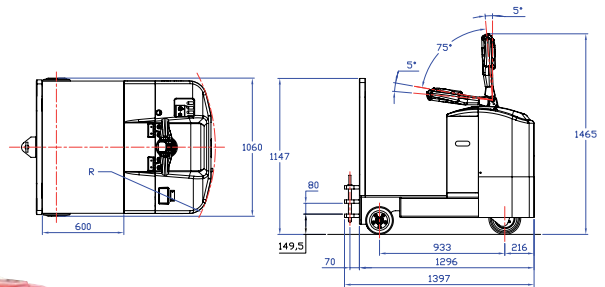
Item		Unit	ATT-60
Drive capacity			
Towing capacity		kg	6000
Travel speed	Empty	Km/h	14
	Loaded	Km/h	12
Gradeability	Empty	%	17
	Loaded	%	9
Braking mode	Drive		Drum brake
	Stay		Hand brake
Battery and Motor			
Battery(5hrs)		Ah	320 / 48V
Charger		A	60 /48V
Drive motor AC 48V		kW	8
Control speed			AC stepless
Wheel and weight			
Steering wheel	(PU)	mm	Ø280×135
Driving wheel	(rubber) Solid	mm	Ø560×170
Truck weight	with battery	kg	1600
	without battery	kg	1070
Truck standard equipment		Emergency power-off button, horn, headlights, direction lights, brake lights, reversing lights, dual rearview mirrors, digital power meter, adjustable safety belt-seat, key switch	

Item	Unit	ATT-60
Truck size		
Wheel base	mm	1528
Overall length (Without towbar)	mm	2038
Overall length (With towbar)	mm	2148
Overall width	mm	1166
Overall height	mm	1326
Seat height	mm	862
Steering wheel height	mm	1184
Pedal height	mm	427
Turning Radius	mm	1747

## ATT-50 + EPS

**ADVANCED TOW TRUCK (AC SYSTEM) (5 TONS, 11000LB) Electronic Power Steering system (EPS system) very easy to drive**

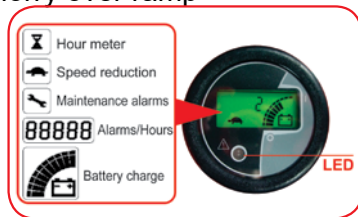
- Electronic Power Steering system (EPS system) very easy to drive
- Advanced AC motor product (AC drive motor 1.6Kw/24V)
- Without carbon brush, reduce service cost
- Save electricity efficiently by 30%
- FRP body cover and battery cover
- Lead-free PU baked enamel painting
- Polyoxymethylene Steering Arm
- No pollution, quiet, safety, durable and reliable
- Tow capacity is powerful and could pull 5 tons (11000lb) lorry on normal flat floor
- It can tow 3 tons lorry over ramp
- Seat is an optional item



### ATT-50

Towing capacity	5000kg (at flat floor)	
Travel speed	loaded	3.0 km/h
	empty	6.0 km/h
Gradeability	loaded	9%
	empty	17%
Weight of truck (240AH)	with battery	965 kg
	w/o battery	750 kg
Load wheels	PU	ø212x70 mm
Drive wheel	PU	ø235x120 mm
Battery capacity at 5 hours charge(24V)	240 AH	
Max. Battery charger current(24V)	40 A	
Inverter	AC stepless	
Steering Arc. total	185 degree	
Traveling brake	type	Electromagnetic spring pressure
	actuated	Drive wheel
Parking brake	type	Electromagnetic spring pressure
	actuated	Drive wheel
	hook	Pintype

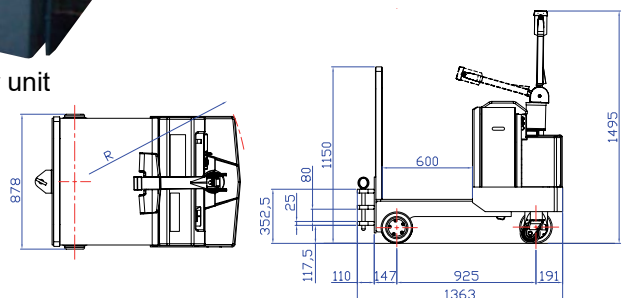
Customer's special requirement dimensions are welcome to produce.Hour meter, pad, seat, beacon light and back buzzer, special towing hook...etc. are optional.



LED MDI-CAN multifunctional indicator



Power unit



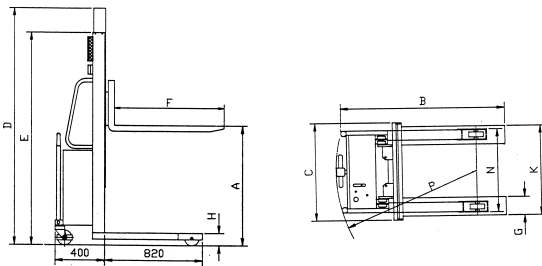
## TT-50

**TOW TRUCK(5 TONS, 11000LB)**

- The driver operates in the center of truck.
- Safety and convenience.
- Turning radius is very small. The operation is convenient.
- Tow capacity is powerful and can drag 5 tons(11000 lb.) lorry on normal flat floor.
- It can tow 3 tons lorry over ramp.
- Seat is an optional item.
- Lead-free PU baked enamel painting



Towing Capacity	5000 kg(at flat floor)
	3000 kg(with 10% gradeability)
Max. Travel Speed	empty 6.0 km/h
	loaded 3.0 km/h
Truck Weight	688 kg(with battery)
Battery	240AH/24V(traction) other options are available
Drive Wheel(Front)	ø212x70 mm(solid tyre)
Load Wheels(Rear)	ø205x70 mmx2pcs(solid pu tyres)
Drive Motor	1.5kw/24v
Charger	220V/40A(microprocess)
Steering	steering arm 185 ARC
Electric Control	Electronic mosfet stepless is optional 3 speed is standard.
Electric Cut off	emergency cut-off handle. microprocess charger cut-off.
Seat	Stand-on is standard. Seat is option.
Brake	electromagntic spring pressure
Instrument	horn, battery discharge indicator.
Hook	Pin type
Main Dimension	1190(L)x850(W)X1460(H)mm
Customer's special requirement dimensions are welcome to produce. Hour meter is optional.	



Item	SPS-10	
Mast Type	Telescopic	
Load Capacity	1000 kg	2200 lb
Load Center	450 mm	17.72"
A Max. Fork Height	2500 mm	98.37"
Service Weight	320 kg	740 lb
Battery	135AH/12V other options are available	
Charger(220V / 110V)(1Phase)	12A(BUILD-IN)	
Lifting Motor	1.5KW/12V	
Fork Wheels	Ø80X70 mm	Ø3.15"X2.75" mm
Material	Poly-urethane With Bearing	
Steering and Caster	Ø180X50 mm	Ø7.09"X2.00" mm
Wheel Material	Poly-urethane With Bearing	
B Overall Length	1450 mm	57.09"
C Overall Width	770 mm	30.31"
D Max. Mast Height	3030 mm	119.29"
E Min. Mast Height	1780 mm	70.08"
F Fork Length	900 mm	35.43"
G Each Fork Width	150 mm	5.91"
H Min. Fork Height	95 mm	3.54"
J Fork Thickness	65 mm	2.56"
K Distance of Forks	330-750 mm	13.00"-29.53"
L Straddle length	820 mm	32.28"
M Each Straddle Width	100 mm	3.84"
N Distance of Straddle	690 mm	27.17"
P Turning Radius	1350 mm	53.15"
Q Length of Body	400 mm	15.75"
Straddle Height	80 mm	3.15"

## SPS-10/12/15/10W/12W/15W MANUALLY PROPELLED, POWERED LIFTING PALLET STACKER (1 TON / 1.2 TONS / 1.5 TONS)

- SPS-10, an electric powered hydraulic lifting, manually-propelled and load capacity 1000kg(2200lb); fork length 900mm(35.43"), adjustable width, lifting height 2500mm(98.4") or 3000mm(118") or 3500mm(137.8"), and wide straddle version available too.
- In addition, SPS-10W wide straddle version type is used for closed pallets. It has fork wheel 80mm(3.15") or 180mm(7.09") diameters for your choice and the straddle inner width will be 1240mm, 1140mm, etc.
- Charger of 110V/12V-12A (build-in) is optional.
- Distance of straddle outer width has option 530mm for european pallets.
- Load capacity 1200kg (SPS-12 and 1500kg(SPS-15) are optional.

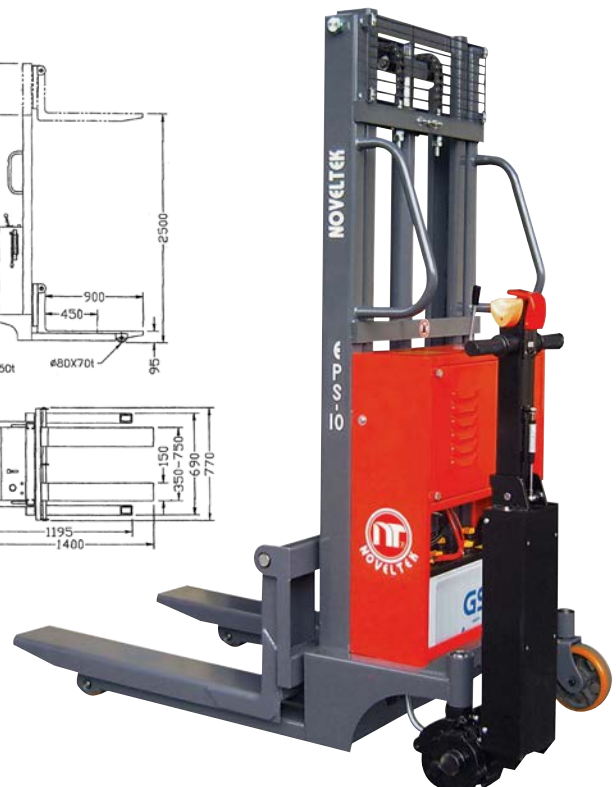
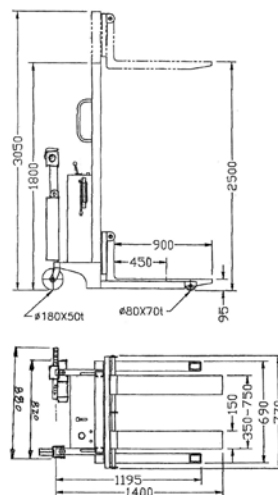


## EPS-10/2500

### ECONOMIC POWERED STACKER (1.0 TON)

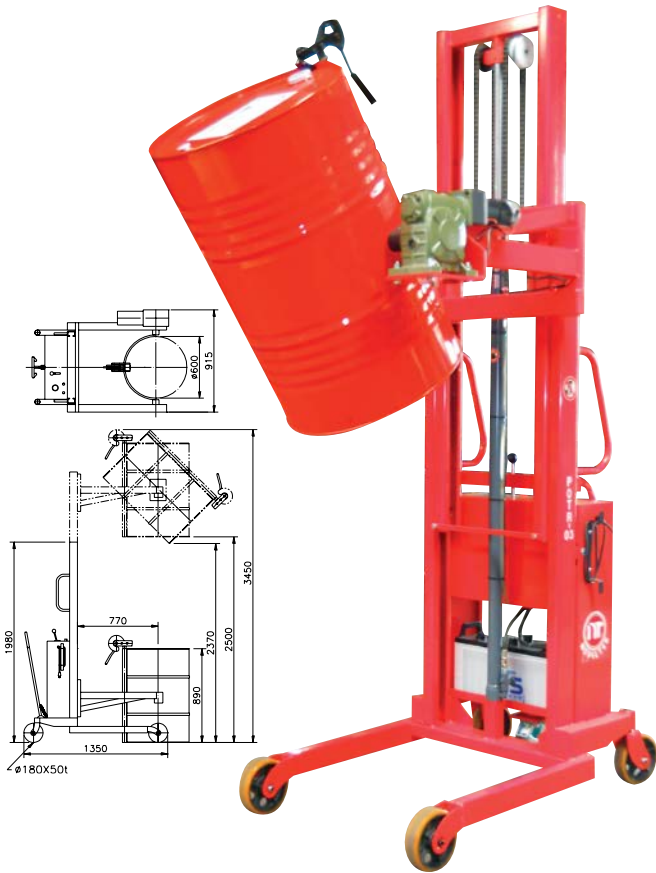
- Electric driving, electric lifting.
- Easy handling.
- Save time, manpower and cost.

Item	EPS-10/ 2500
Load Capacity	1000 kg
Load Center	450 mm
Battery	135AH /12V
Charging Current ( 220V )	12A ( Build-in)
Lifting Motor	1.5 KW/ 12V
Driving Motor	500W/ 12V
Drive Wheels	Ø160mm x 56mm
Controller	Stepless
Full Load Driving Speed	2.0 km/ H
Empty Driving Speed	2.5 km/ H
Brake	Electromagnetic Brake
Fork Wheels	Ø 80 x 70mm
Material	Poly-urethane with bearing
Steering and Caster Wheel	Ø 180 x 50mm
Fork Lifting Height	90- 2500mm
Overall Length	1610mm
Overall Width	970mm
Mast Height	1780- 3030mm
Fork Size	W150 x L900mm
Outer Width of Forks	330-750mm ( Adjustable )
Straddle Size	100 x 820mm
Straddle Height	80 mm
Outer Width of Straddles	690mm
Turning Radius	1400mm



## POTR-03/2400

### MANUALLY PROPELLED, POWERED LIFTING STANDARD OIL TANK ROTATING STACKER

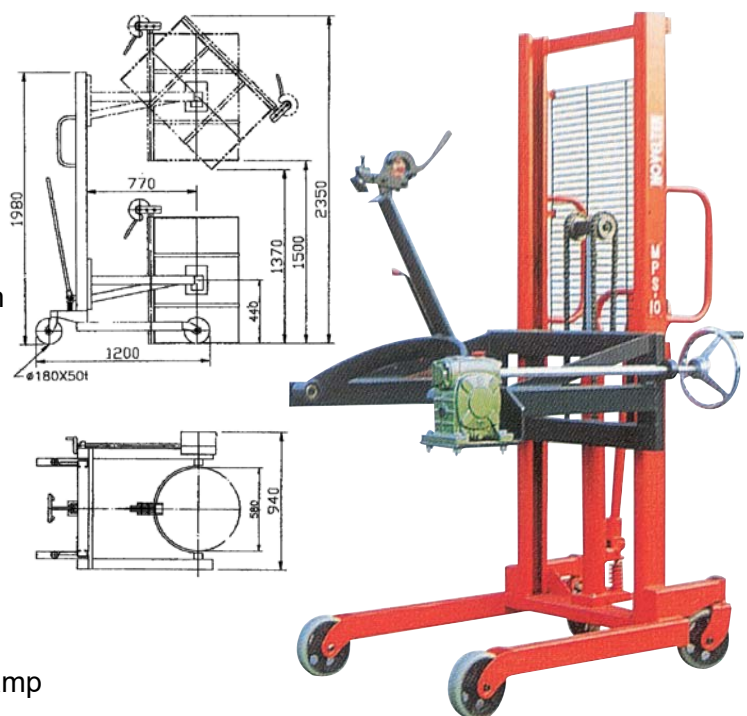


- Min. mast height = 1890 mm
- Overall truck length = 1350 mm
- Overall truck width = 915 mm
- Standard oil tank = Ø580 mm x h890 mm
- Max. oil tank top height = 3450 mm
- Max. oil tank 45°
- Bottom height = 2370mm
- Load center = 770 mm
- Min. clamp center height = 440 mm
- Straddle length = 770 mm
- Electric power operated hydraulic lifting cylinder
- Electric operated rotating gear set of 360°
- Lifting capacity = 300 kg
- Turning radius = 1300 mm
- Front & rear wheels = Ø180x50 mm
- Battery = 135AH/12V
- Charger = 110V/12V-12A or 220V/12V-12A
- Total truck weight = 320 kg
- Clamp method : upper and lower quickly clamp
- The digital weight scale is an optional item.  
It can turn to zero and deduct weight
- Weighing tolerance :1000 kg±0.1 Kg.

## MOTR-03/1400

### MANUAL STANDARD OIL TANK ROTATING STACKER

- Lifting capacity : 300 kg
- Overall truck length : 1200 mm
- Overall truck width : 940 mm
- Min. mast height : 1980 mm
- Max. lifting height : 1400 mm
- Max. oil tank 45° bottom height : 1370 mm
- Max. oil tank top height : 2350 mm
- Truck weight : 195 kg
- Straddle length : 770 mm
- Min. clamp center height : 440 mm
- Turning radius : 1250 mm
- Front & rear wheels : Ø180x50 mm
- Manual operated hydraulic lifting cylinder
- Manual operated rotating gear set of 360°
- Standard oil tank : Ø580 mm x H890 mm
- Clamp method : upper and lower quickly clamp





## MOTL-03/500 MANUAL OIL TANK LIFT TRUCK

Manual operated hydraulic lifting cylinder.  
Upper quickly clamp.



Lift Capacity	300 kg
Load Center	300 mm
Min. Mast Height	950 mm
Max. Mast Height	1420 mm
Front & Rear Wheels	Ø180 × 50mm
Truck Length	1070 mm
Truck Outer Width	800 mm
Truck Inner Width	670 mm
Service Weight	105 kg
Suitable Standard Oil Tank	Ø580 × H890 mm

## MODEL : OT-50 STANDARD OIL TANK TRUCK

Clamp method: quickly clamp upper and lower



Lift Capacity	300 kg
Truck Width	900 mm
Truck Length	850 mm
Truck Height	1200 mm
Wheels	11"
Service Weight	26 kg
Applicable Standard Oil Tank	Ø580 × H890 mm
	Ø610 × H880 mm



## OTH-500-2 OIL TANK HOLDER(FOR TWO TANKS)

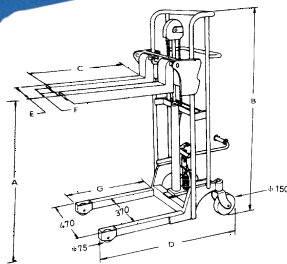
1. CAPACITY : 600 kg
2. LENGTH : 900 mm (W/O HOLDER)
3. WIDTH : 1200 mm
4. HEIGHT : 830 mm
5. FORK LENGTH : 790 mm
6. OPERATION HEIGHT : 720 mm



## OTH-300-2 OIL TANK HOLDER

1. CAPACITY : 600 kg
2. LENGTH : 900 mm (W/O HOLDER)
3. WIDTH : 1000 mm
4. HEIGHT : 830 mm
5. FORK LENGTH : 790 mm
6. OPERATION HEIGHT : 720 mm

## MPS-04 MANUAL PALLET STACKER(400KG)

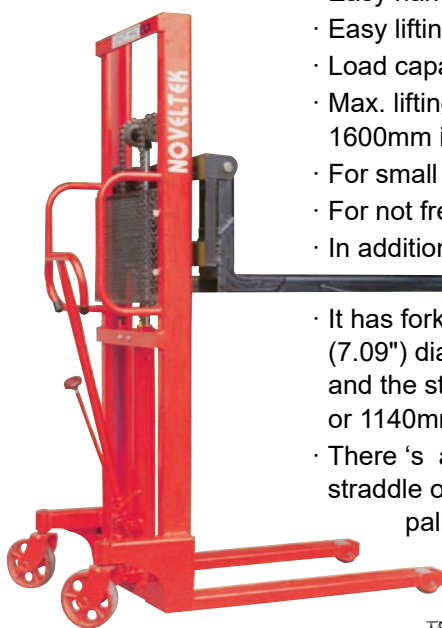


MODEL:MPS-04/	1100	1100A	1500	1500A	1700	1700A	1820	1820A
LOAD CAPACITY(kg)	400	400	400	400	400	400	400	400
A MAX. LIFTING HEIGHT(mm)	1100	1100	1500	1500	1700	1700	1820	1820
FORK WIDTH TYPE	FIXED	ADJUST-ABLE	FIXED	ADJUST-ABLE	FIXED	ADJUST-ABLE	FIXED	ADJUST-ABLE
B OVERALL HEIGHT (mm)	1350	1350	1750	1750	1950	1950	2070	2070
OVERALL WIDTH (mm)	600	600	600	600	600	600	600	600
EACH FORK WIDTH (mm)	110	110	110	110	110	110	110	110
C FORK LENGTH (mm)	610	640	610	640	610	640	610	640
D OVERALL LENGTH (mm)	1050	1160	1050	1160	1050	1160	1050	1160
E MAX. FORK OUTER WIDTH(mm)	550	540	550	540	550	540	550	540
F MAX. FORK INNER WIDTH(mm)	330	315	330	315	330	315	330	315
G STRADDLE LENGTH (mm)	565	675	565	675	565	675	565	675
MIN. FORK HEIGHT (mm)	85	85	85	85	85	85	85	85
FRONT WHEEL (mm)	Ø75X34	Ø75X34	Ø75X34	Ø75X34	Ø75X34	Ø75X34	Ø75X34	Ø75X34
REAR WHEEL (mm)	Ø150X40	Ø150X40	Ø150X40	Ø150X40	Ø150X40	Ø150X40	Ø150X40	Ø150X40
SERVICE WEIGHT (kg)	92	97	108	113	112	117	118	121
PLATFORM(LXW) (mm)	610X570	640X570	610X570	640X570	610X570	640X570	610X570	640X570

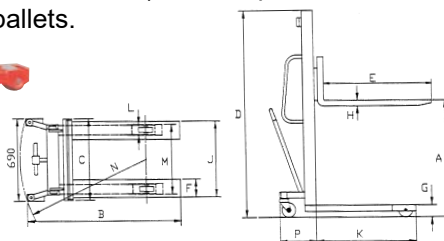
Note: A: adjustable fork width

- Manual foot operated lifting hydraulic stacker.
- One wheel with brake is standard.
- Two wheels with two brakes are option.
- Maximum fork lifting height:1100~1820mm.
- Single action pump.
- Light duty stacker.

## MPS-10/12/15/10W/12W/15W MANUAL PALLET STACKER(1 TON/1.2 TONS/1.5 TONS)



- Manually hydraulic pump lifting.
- Easy handing.
- Easy lifting.
- Load capacity:1000kg
- Max. lifting height:1500mm is standard, 1600mm is optional.
- For small area use.
- For not frequent user.
- In addition, (MPS-10W) wide straddle version is used for closed pallets.
- It has fork wheel 80mm (3.15") or 180mm (7.09") diameters is optional for your choice, and the straddle inner width will be 1240mm, or 1140mm...etc. too.
- There 's an option 530 mm (distance of straddle outer width) for European closed pallets.



Item	MPS-10/1500(Standard)	
Load Capacity	1000 kg	2200 lb
Load Center	450 mm	17.72"
A Max. Fork Height	1500 mm	59.05"
Service Weight	180 kg	396"
Fork Wheel Material	ø80x70 mm poly-urethane	ø3.15"x2.75" ←
Steering And Caster Wheel Material	ø180x50 mm poly-urethane	ø7.09"x2.00" ←
B Overall Length	1300 mm	51.18"
C Overall Width	710 mm	27.95"
D Overall Height	1880 mm	74.00"
E Fork Length	900 mm	35.43"
F Fork Width	150 mm	5.90"
G Min. Fork Height	85 mm	3.54"
H Fork Thickness	65 mm	2.56"
J Distance of Forks	330-650 mm	13.00"-25.98"
K Straddle length	820 mm	32.28"
L Each Straddle Width	100 mm	3.94"
M Distance of Straddle	590 mm	27.16"
N Turning Radius	1300 mm	51.18"
P Length of Body	330 mm	13.00"
Straddle Height	90 mm	3.35"

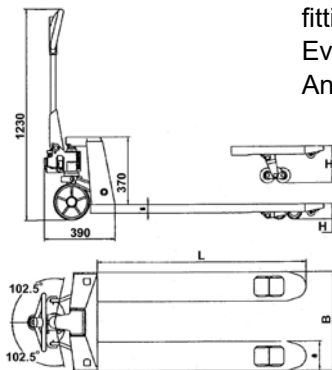
- Load capacity 1200kg(MPS-12) and 1500kg(MPS-15) are optional.

## HPT-20/25/30

### HAND PALLET TRUCK(2 TONS / 2.5 TONS / 3 TONS)

- Load capacity 2000kg/2500kg/3000kg.
- High quality hydraulic lifting
- Durable and reliable cylinder.
- No oil leakage.
- Easy handling.
- Easy lifting.
- Baked enamel painting.
- With an overload relief valve to avoid misuse due to over loading.
- Steer and fork wheels, made by steel and covered by polyurethane.

Reliable, durable and critical hydraulic pump withstands thousands of lifting/ lowering cycles. And it is well sealed to prevent leaking.



There is no special operation training required. The spring-loaded loop handle provides easy operation and automatically returns to vertical position when released. Neutral position allows the operator to handle load at the most convenient angle.

One piece "C"-channel formed steel reinforces fork strength to carry more load without bending. Incorporated with DUCTILE IRON castings at pivotal points, no grease fitting is required. Dual wheels sets are also available. Every 6 units are packed on a wooden pallet for export. An entry roller has fitted at the front of each fork.

Item	Standard	Option
Fork Height lowered(H1) lifted(H2)	85 mm 200 mm	75 mm 190 mm
Fork Wheels	ø 82mm x 70mm	ø 76mm x 93mm
No. of Fork Wheels	2pcs x 2	1 pc x 2
Steer Wheels	ø180mm x 50mm	ø180mm x 50mm
Wheel Material	Steel Covered By Poly-urethane	Steel Covered By Nylon
Service Weight	2 tons: 81 kg / 3 tons: 87 kg	
Fork Thickness	45mm	

Model	Overall Width(A)	Fork Length(L)	Inner Width(B)
HPT-NS	520 mm	910 mm	200 mm
HPT-NM	520 mm	1070 mm	200 mm
HPT-WM	685 mm	1070 mm	365 mm
HPT-WL	685 mm	1220 mm	365 mm

## HPT-40/50

### HAND PALLET TRUCK (4 TONS / 5 TONS)



HPT-40	Standard
Fork height Lowered Lifted	85mm 205mm
Fork weels	ø80mm x 60mm (tandem)
No. of fork wheels	2pcs x 2
Steer wheels	ø200mm x 60mm
Wheel material	Steel Covered By Poly-urethane
Each fork width	160mm
Fork thickness	60mm
Size	L900mm x W520mm L1050mm x W520mm L1220mm x 680mm
HPT-50	Standard
Fork height Lowered	90mm
Fork wheels	ø85mm x 70mm (tandem)
No. of Fork wheels	2pcs x 2
Steer wheels	ø200mm x 70mm
Wheel material	Steel Covered By Poly-urethane
Each fork width	190mm
Size	L1220mm x W700mm or W800mm L1500mm x W700mm or W800mm

\* Customer's special requirement dimensions are welcome to produce.

## ELT-02~50 (200KG-5000KG) ELECTRIC LIFT TABLE

Double Scissor



Tandem



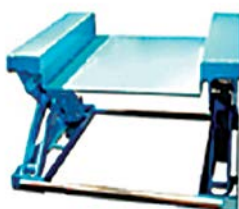
Single Scissor



Triple Scissor



Zero-low



Sliding



## DOCK LEVELER

This product is designed for the height adjustment between loading dock and container in favor of the convenience of lift truck to work well inside and outside container, in which the efficiency will be definitely promoted.

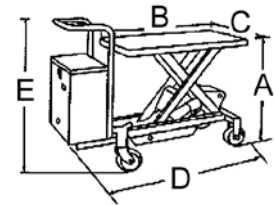
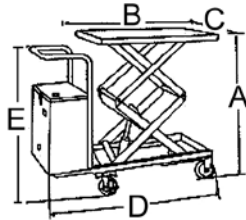
Model	Size	Capacity	Power
	mm	kg	hp/kw
DL-18A	1830*2424(6'*8')	11,000(25,000lb)	1
DL-19A	1980*2424(6.5'*8')	11,000(25,000lb)	1
DL-21A	2130*2424(7'*8')	11,000(25,000lb)	1
DL-18H	1830*2424(6'*8')	15,000(35,000lb)	1
DL-19H	1980*2424(6.5'*8')	15,000(35,000lb)	1
DL-21H	2130*2424(7'*8')	15,000(35,000lb)	1
DL-21HL	2130*3060(7'*10')	15,000(35,000lb)	1





## BLT-300 / 350D / 500 / 800

### BATTERY LIFT TABLE



Model		BLT-300	BLT-350D	BLT-500	BLT-800
Load capacity (kg)		300	350	500	800
Max. lifting height (mm)	A	860	1300	1018	970
Min. lifting height (mm)		290	355	438	438
Table length (mm)	B	815	910	1010	1010
Table width (mm)	C	500	520	520	520
Overall length (mm)	D	1160	1260	1270	1255
Overall width (mm)		500	540	520	520
Handle height (mm)	E	880	1015	950	950
Wheel size (mm)		Ø100x32mm	Ø127x40mm	Ø150x40mm	Ø150x40mm
No. of brake		1	1	1	2
Service weight (kg)		106	145	157	160
Lifting motor power		550W	1500W	550W	2000W
Charger (buid-in)		110 or 220V	110 or 220V	110 or 220V	110 or 220V
Battery (12V)		24V 18AH	12V 65AH	24V 26AH	24V 26AH

Note: D: Double pantograph

\*option item: 8" wheel, moveable handle cable control, wireless remote control, AC motor...etc.

## LT-150F/300F/350D/500/500D/800/1000

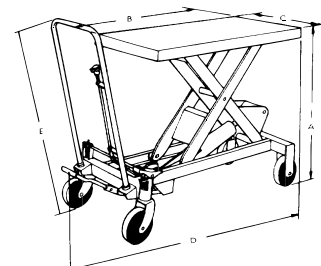
### LIFT TABLE(150KG-1000KG)

MODEL	LT-150F	LT-300F	LT-350D	LT-500	LT-500D	LT-800	LT-1000
LOAD CAPACITY(KG)	150	300	350	500	500	800	1000
A MAX.LIFTING HEIGHT(MM)	750	880	1300	1020	1600	1020	1000
MIN.TABLE HEIGHT(MM)	250	288	335	438	433	438	410
B TABLE LENGTH(MM)	700	815	910	1010	1010	1010	1000
C TABLE WIDTH(MM)	450	500	520	520	520	520	513
D OVERALL LENGTH(MM)	853	1008	1098	1191	1270	1258	1320
E HANDLE HEIGHT(MM)	796	896	960	900	960	960	980
OVERALL WIDTH(MM)	450	500	520	520	520	520	575
WHEELS SIZE(MM)	100X32	100X32	127X40	150X40	150X40	150X40	150X40
NO. OF BRAKE	1	1	1	1	1	2	2
SERVICE WEIGHT(KG)	33	69	95	112	151	115	115

Note. F: foldable handle

D: double pantograph

- 2 Brakes on 2 wheels is standard for LT-800/1000.
- 2 Brakes on 2 wheels is optional for LT-300F~LT-500D.



**PPS-20TL  
LIFT TABLE TRUCK**



P12

**PPS-03LRT/1450  
ROTATING LIFT TABLE TRUCK**



P12

**PPS-03 LRT/1450  
ROTATING LIFT TABLE TRUCK**



P12

**PPS-10/15/20TL  
TABLE LIFT TRUCK**



P12

**PPS-10W/15W/18W/20W  
SHAFT CARRIER STACKER**



P15

**PPS-10W/15W/18W/20W  
ROLLER CARRIER STACKER**



P15

**PPS-10W/15W/18W/20W  
STAINLESS STEEL FORK  
STACKER**



P15

**PPS-10/15/18/20+  
HOOK**



P15

**EPS-04 ECONOMIC POWERED  
STACKER (400 KG)**



P36

**SPS-10 SEMI-POWERED  
LIFTING PALLET STACKER  
+CAGE**



P33

**SPS-04  
SEMI POWERED STACKER**



P36

**DOCK LEVELER**



P38

**OTH-500-2 OIL TANK HOLDER**



P35

**ROLL CAGE TROLLEY**



**WIRE CAGE**



**HPT-20  
WEIGH SCALE HAND PALLET  
TRUCK**



P37

**MPL-50/65/80/95/110  
DPL-95/110/130**



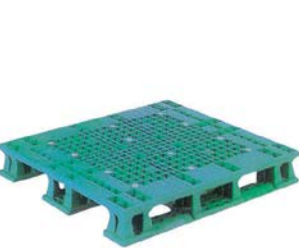
**RACKS**



**TABLES FOR BATTERY  
CHANGE**



**PLASTIC PALLET**



**PPT-18/20/25/30/40+  
BACK REST**



P26

**PPT-18/20/25/40+  
4 FORKS PALLET TRUCK**



P26

**PPT-20LC  
ORDER PICKER TRUCK**



P26

**PPT-18/20/25/30/40+ SPECIAL  
WIDER FORKS**



P26

**PPT-18/20/25/30/40+  
STAINLESS STEEL  
PALLET TRUCK**



P26

**PPT-20/25/30/40  
SPECIAL PALLET TRUCK**



P26

**PPT-15  
SPECIAL NARROW FORK  
TRUCK**



P26

**PPT-18/20/25/30/40  
ROLLER CARRIER TRUCK**



P26

**APT-20  
HYDROGEN FUEL CELL  
PALLET TRUCK**



P18

**ART-15+ CRANE ARM**



P4

**PPT-80/100/150  
PALLET TRUCK**



P26

**PPT-80/100/150  
PALLET TRUCK**



P26

**PPT-20  
SPECIAL TOW TRUCK**



P26

**TT-50+SIDE GUARD  
TOW TRUCK**



P32

**TT-50+SIDE GUARD  
TOW TRUCK**



P32

**ET-10  
ELECTRIC TRUCK**



**CRT-10/15  
SPECIAL REACH TRUCK WITH  
BOOM**



**CRT SPECIAL REACH TRUCK**



**AGF (AUTOMATIC FORK LIFT  
TRUCK)**



**PMGV (FULL STAINLESS  
STACKER)**





**ABF-15/20/25 +  
BALE CLAMP (AC)**



P1

**ABF-15/20/25 +  
ROTATING FORK CLAMP (AC)**



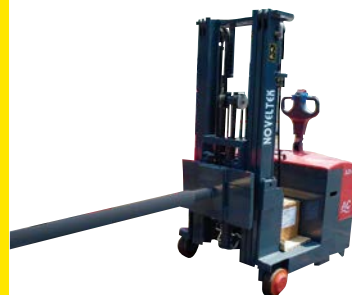
P1

**ART-10/15/20 +EPS (AC)  
REACH TRUCK +  
OVERHEAD GUARD**



P4

**ACS-05/08/10/12/15 +EPS (AC)  
COUNTERBALANCED  
STACKER+BOOM**



P6

**APT-20/25/30  
PALLET TRUCK + CASE**



P18

**APT-20/25/30(AC)  
PALLET TRUCK COVERED BY  
STAINLESS STEEL**



P18

**CRT-10/15(DC) REACH TRUCK  
+FOLDABLE FORK**



**Digital weight Scale Forks**



**PPS-10/15/20  
STACKER +CASE**



P12

**PPS-10/15/20 STACKER +  
OVERHEAD GUARD**



P12

**PPS-10/12 SIDE MAST+ REACH  
MAST STACKER**



P12

**APS/PPS+ Scoop**



P12



**NOVELTEK INDUSTRIAL MANUFACTURING INC.**

TEL: 886-37-220-741

FAX: 886-37-226-152, 886-37-220-849

SKYPE: NOVELTEK

ADDRESS: No. 16-1, Shui-Liu-Niang, Shui-yuan Village, 360 Miaoli City, Miaoli County, Taiwan R.O.C.

URL: <http://www.liftruck.com.tw>

URL: <http://www.liftruck.net>

E-mail: [liftruck@ms18.hinet.net](mailto:liftruck@ms18.hinet.net)

©copyright 2024.7